

Active Liquid Tanks Specification Sheet



PTC00240FG

240 litre Squat Free Standing Cartage Tank

Unit Specifications

Item	Description	Details
Tank	240 litre	UV stabilised polyethylene specially formulated for transport tanks. Complies with AS2070:1999 & AS4766:2006 compliant. Food grade with 10 year guarantee.
Lid	255mm	255mm threaded lid assembly with fixed labyrinth breather valve made to current anti-pollution standards with double breather valve to empty tank quickly with closed lid even with high delivery pump
Tank outlet	3/4" MBSP	3/4" poly drain bung & seal
Dimensions	PTC00240FG	925mm(L) x 710mm(W) x 510mm(H)
Dry weight		16kg
Baffles		No baffle
Colour		Faint green
Load Rating		1.3 Specific Gravity (SG)
Mounting	M8 Brass Inserts	2 x threaded brass inserts in base of tank

1

Active Liquid Tanks Specification Sheet

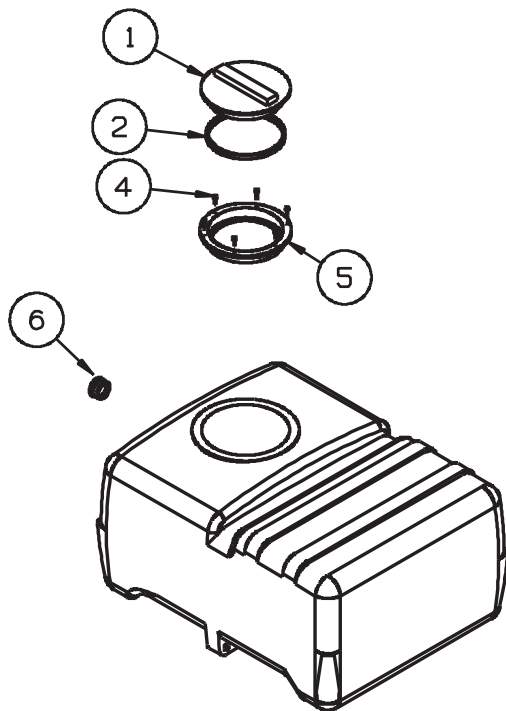
Features

- Unconditional guarantee against rust
- Extraordinary impact resistance
- Impressive range of 'flex' to cope with chassis movement and twisting in tough operating conditions
- Calibrated for measurement of contents
- Mounts directly to any flat surface
- Spill containment lip surrounds lid
- Australian made for Australian conditions
- Optional tank colours available

For Use

- Potable (drinking water delivery)
- Dust suppression units
- Liquid fertiliser transport
- Water supply for spraying contractors
- Drillers mud
- Molasses transport

Dimensional Drawing – PTC00240FG



OVERALL DIMENSIONS 925(L) X 710(W) X 510(H)

ITEM	CODE	Description
1,2,5	ARLP250VSR	ø255 Lid Assembly
4		Stainless Steel Screws
6	CFNB20M	3/4" Poly Drain Bung & Seal

2

*Rapid spray warranty requires fitting the Ball Baffle System to tanks larger than 6000 litres partially filled