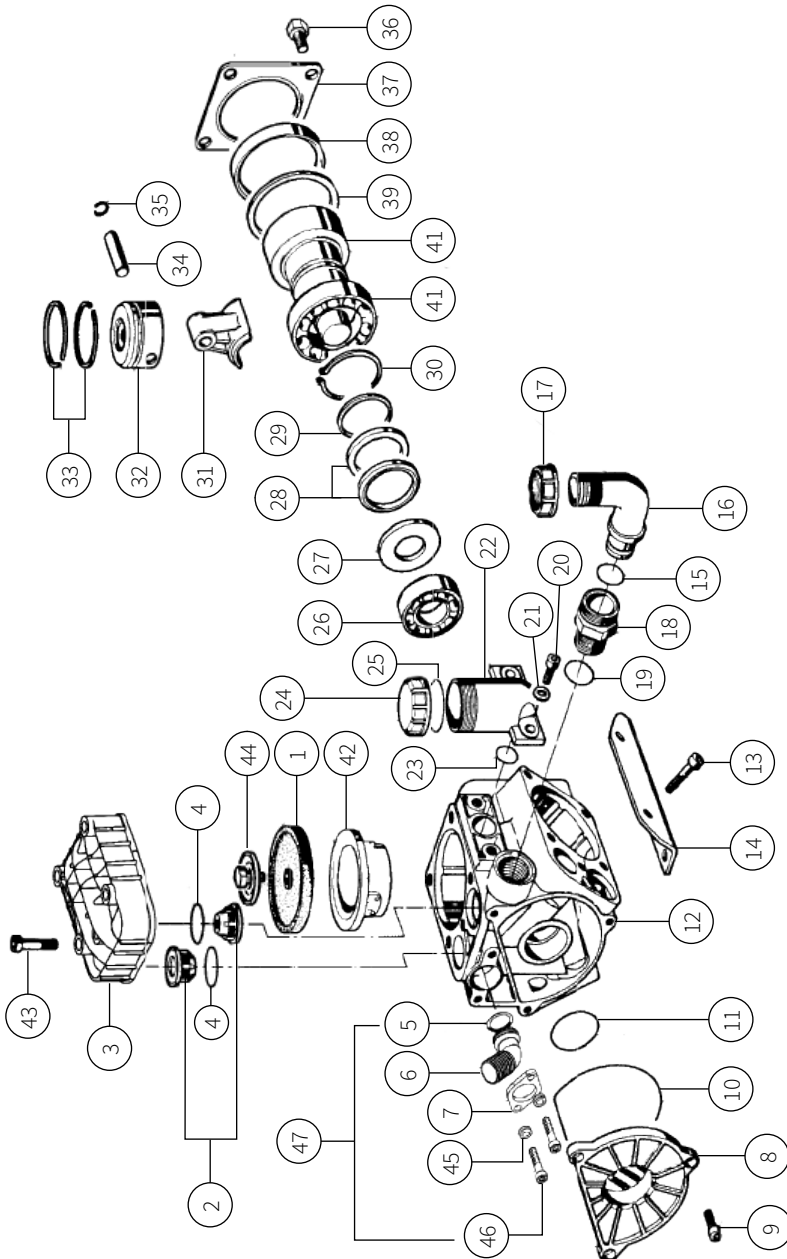


BERTOLINI 34L/MIN PUMP | APL0340KGGH



Rapid Spray Parts Breakdown

#	CODE	DESCRIPTION	QTY
1	03.0040.31.2	Piston Diaphragm	1
2	03.9821.97.3	Valve Assembly	6
3	03.0202.09.2	Head	3
4	03.0029.36.2	Valve Seal	6
5	80.3218.00.2	O-Ring 3.2 x 22	1
6	31.1515.09.2	Outlet Flange G ½	1
7	31.1517.61.2	Flange	1
8	03.0003.09.2	Suction Cover	1
9	86.2131.00.2	Screw M6 x 18 UNI5931	3
10	80.3210.66.2	O-Ring 2.62 x 36.27	1
11	80.3208.30.2	O-Ring 2.62 x 36.14	1
12	03.0001.09.2	Crankcase	1
13	86.2900.00.2	Screw M8 x 55 UNI5931	4
14	03.0014.61.2	Mounting Rail	2
15	80.3200.00.2	O-Ring 2.62 x 22.22	1
16	84.0542.00.2	90° Elbow Connector Dia. 25-1"	1
17	82.0049.00.2	Wing Nut M34	1
18	83.5062.10.2	Nipples G. ¾ - M34	1
19	80.3205.00.2	O-Ring 2.62 x 25.07	1
20	86.2730.00.2	Screw M8 x3 0 UNI5931	2
21	84.3685.00.2	Washer Dia. 8.4 x15 x 1.5	2
22	23.0008.32.2	Oil Filler	1
23	80.3180.00.2	O-Ring 2.62 x 15.08	1
24	85.2750.00.2	Oil Filler Cap	1
25	82.4120.00.2	Gasket Dia. 45 x 19 x 1.5	1

#	CODE	DESCRIPTION	QTY
26	81.2646.00.2	Bearing Dia. 20 x 52 x 15	1
27	03.0011.61.2	Spacer	1
28	94.0047.76.2	Conrod Ring	2
29	03.0012.61.2	Spacer	1
30	80.1331.00.2	Shaft Ring D. 45	1
31	03.0005.09.2	Conrod	3
32	03.0006.09.2	Piston Dia. 48	3
33	81.8502.50.2	Piston Ring	6
34	85.2006.00.2	Piston Pin Dia. 10	3
35	80.0003.00.2	Ring Dia. 10	6
36	86.3185.00.2	Screw M10 x 16 UNI5739	4
37	17.0013.61.2	Cover	1
38	80.2264.10.2	Oil Seal Dia. 68 x 90 x 10	1
39	03.0015.61.2	Spacer	1
40	03.0017.26.2	Crankshaft	1
41	81.2933.00.2	Bearing Dia. 45 x 75 x 16	1
42	03.0007.01.2	Piston Sleeve	3
43	86.2893.00.2	Screw M8 x 50 UNI5931	1
44	03.0021.97.3	Kit Diaphragm Washer / Screw	3
45	84.3585.00.2	Washer Dia. 6 UNI6592	2
46	86.2108.00.2	Screw M6 x 16 UNI5931	2
47	31.8916.97.3	Kit G. ½"	

SPECIFICATIONS

	RPM	RPM	650	650
Power	KW	HP	2.5	3.4
Weight	Kg	Lbs	7.3	16
Suction Lift - MAX	mt	ft	1.5	4.9
Ø Intake	mm	in	24	1"
Ø High Pressure	mm	in	G ½	G ½
MAX Temperature	°C	°F	40	104
Oil Type	SAE	W	SAE 30	30W
Oil Capacity	Lt	U.S.G	0.6	0.16