

# /// **RAPID BLUE** ///<sup>®</sup>

## GENIUS DEF DISPENSING UNITS

### SPECIFICATION SHEET



DALO100LT035AV1

**100 & 200 LITRE**

### UNIT SPECIFICATIONS

ITEM	DESCRIPTION	DETAILS
TANK	100 & 200 litre	Tanks manufactured from urea grade polyethylene – Diesel Exhaust Fluid (DEF) compatible
PUMP	Svelto Blue 12 volt	35 L/min stainless steel pump with internal bypass. 2 year warranty. Made in Italy
HOSE		4 metres of 19mm flexible delivery hose
FILLER CAP		Pad lockable filler cap, stainless steel with nozzle restrictor
BREATHER		Stainless steel specifically designed splash resistant breather
NOZZLE	3/4"	Stainless steel auto shut-off nozzle for controlled dispensing
PORTS		3/4" BSP ports
POWER SOURCE	12 volt	4m of electrical cable with battery clips and fuse
MOUNTING		4 x M10 brass inserts in base of tank
DRAIN	Bung	3/4" drain bung

### TANK SPECIFICATIONS

CODE	TANK SIZE (LITRES)	LENGTH (mm)	WIDTH (mm)	HEIGHT (mm)	WEIGHT (kg)
DAL0100LT035AV1	100	800	680	465	32
DAL0200LT035AV1	200	800	680	710	38

### PUMP SPECIFICATIONS

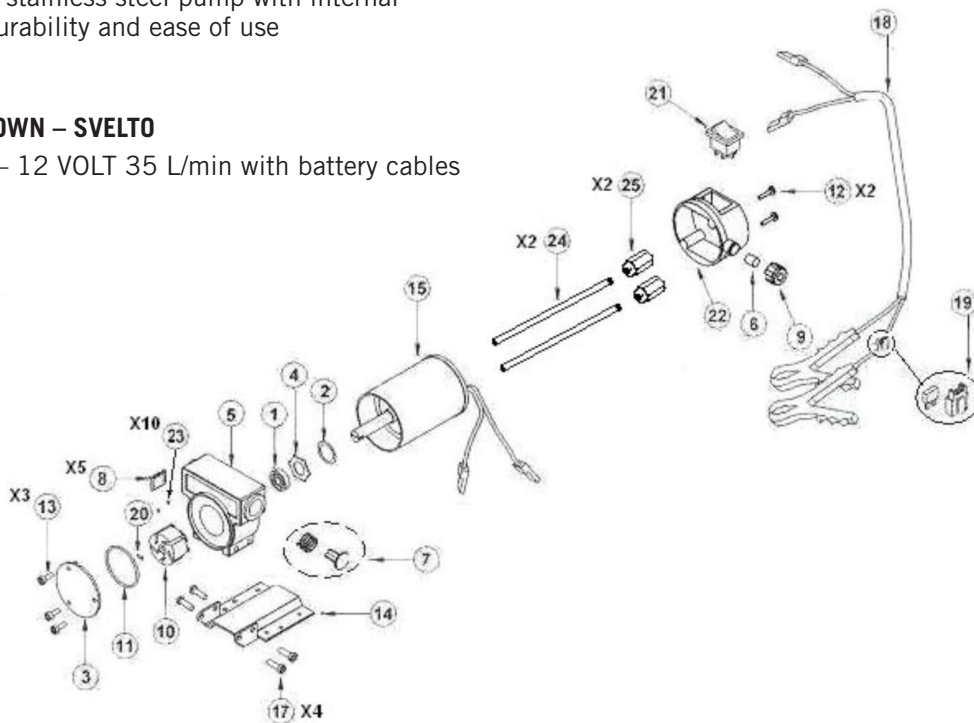
PUMP MODEL	DESCRIPTION	FLOW	CURRENT nom.A	DUTY CYCLE	PORT
Svelto Blue pump ADPT035V1P	12 volt rotary electric vane pump	35 L/min	25	30 mins	3/4" BSP

### FEATURES

- Stainless steel swivel to prevent hose tangles
- Lockable covered pump compartment
- Moulded handles for easy lifting and tie down
- 35 L/min all stainless steel pump with internal bypass for durability and ease of use

### PARTS BREAKDOWN – SVELTO

ADPT035V1P – 12 VOLT 35 L/min with battery cables



### PARTS LIST

No.	PART NAME	PER. SET
1	Bearing	1
2	Seal	1
3	Pump Cover	1
4	O-ring	1
5	Pump Body	1
6	Seal	1
7	Pump Bypass	1
8	Pump Spring	5
9	Gland	5
10	Rotor	1
11	Seal	1
12	Screw 6 x 40	2

No.	PART NAME	PER. SET
13	Screw 5 x 8	3
14	Pump Base	1
15	Motor	1
17	Screw 6 x 12	4
18	Leads with Aligator Clips	2
19	Fuse	1
20	Reed	2
21	Switch	1
22	Cap	1
23	Bypass	5
24	Threaded Rod	2
25	Nut	2