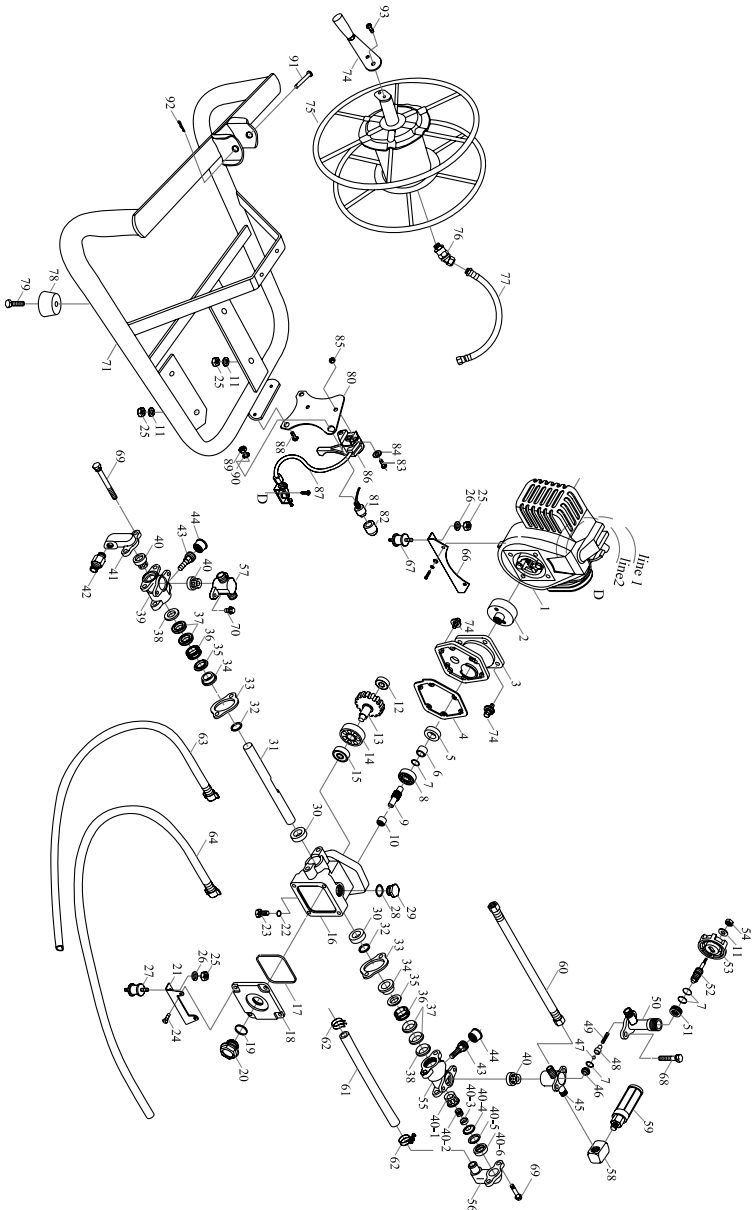


# COMMANDO 12L/MIN PUMP & HONDA GX35 MOTOR

APP0120GH030G



# Rapid Spray Parts Breakdown

#	Part No.	Qty	Description	#	Part No.	Qty	Description
1		1	Honda GX35 Engine	44	CPUPP044	1	Grease cup
2	CPUPP002	1	Clutch Drum	45	CPUPP045	1	Outlet Manifold
3	CPUPP003	1	Housing Housing	46	CPUPP046	1	Regulator seat
4	CPUPP004	1	Housing Gasket	47	CPUPP047	1	Regulator ball
5	CPUPP005	1	Oil Seal	48	CPUPP048	1	Regulator ball cup
6		1	Steel Spacer	49	CPUPP049	1	Regulator spring
7	CPUPP007	4	9x13 O-Ring	50	CPUPP050	1	Regulator valve housing
8	CPUP008	1	Bearing HK1010	51	CPUPP051	1	Regulator housing nut
9		1	Shaft	52	CPUPP052	1	Regulator valve screw
10	CPUPP014	1	Bearing 6203	53	CPUPP053	1	Regulator knob
15	CPUPP015	1	Bearing 6200	54	CPUPP054	1	M6 Nyloc Nut
16	CPUPP016	1	Crank Case 18mm	55	CPUPP055	1	Cylinder head RIGHT
17	CPUPP017	1	O-Ring G60	56	CPUPP056	6	Suction manifold RIGHT
18	CPUPP018	1	Crank Case Cover	57		4	Outlet manifold LEFT
19	CPUPP019	1	O-Ring G25	58		8	Elbow ¼ NPT
20	CPUPP020	1	Oil Glass	59	CPUPP059	2	Pressure gauge
21		1	Pump Stand	60	CPUPP060	1	Pressure manifold hose
22	CPUPP022	1	O-Ring	61	CPUPP061	1	Suction manifold hose
23	CPUPP023	1	Draining Plug	62	CPUPP062	2	Hose clamp
24		6	M6x12 Screw	63	CPUPP063	1	Bypass hose
25		4	M6 Nut	64		2	Suction hose
26		4	M6 Spring Washer	66		1	Engine stand
27	CPUPP027	2	Rubber Mount	67	CPUPP067	2	Rubber mount
28	CPUPP028	1	O-Ring	68		2	M6x45 Screw
29	CPUPP029	1	Oil Filler Cap	69		2	M6x75 Screw
30	CPUPP030	2	Oil Seal	70		2	M6x12 Screw
31	CPUPP031	1	18mm Piston	71	CPUPP071	1	Steel Frame
32	CPUPP032	1	O-Ring	74		1	Screw M6x16
33		2	Fixed Plate	75	CPUPP075	1	Hose reel spool
34	CPUPP034	2	Adjusting ring	76	CPUPP076	1	Hose reel swivel
35	CPUPP035	2	Grease Ring	77	CPUPP077	1	Hose reel whip hose
36	CPUPP036	2	V-packing upper seal	78	CPUPP078	4	Rubber foot
37	CPUPP037	4	V-packing	79		4	M8x25 Screw
38	CPUPP038	1	Packing seat	80		1	Throttle mounting plate
39	CPUPP039	1	Cylinder Head LEFT	81		1	Hill switch
40	CPUPP040	1	Valve Assembly	82		1	Rubber sheath
40-1		1	Valve Nut	83		2	3/16"x3/8" L Screw
40-2		1	Valve Spring	84		2	3/16" Washer
40-3		1	Valve Plug	85		2	3/16" Nut
40-4		4	Valve Seat	86		1	Throttle
40-5		1	Valve Ring	87		1	Throttle cable comp
40-6		1	Valve Packing	88		2	Screw
41	CPUPP041	1	Suction manifold LEFT	89		2	Washer
42		2	Connector Nipple	90		2	Nut
43	CPUPP043	1	Grease cup	122	CPUPP0122	1	Ball valve & tee piece