

Active Diesel Tanks Specification Sheet



DUC3000LFB060V1

50 - 10,000 Litre Diesel Tanks

Unit Specifications

Item	Description	Details
Tank	50 – 10,000 litre	Tanks manufactured from specifically formulated diesel grade polyethylene meeting ECE R34.01 & AS 1940-2004, AS 2809.2-2008 requirements. 10 year warranty
Filler cap	200 – 10,000 litre	Non-vented pad-lockable filler cap with strainer and safety chain. #50 mesh filter
Breather		Specifically designed splash resistant breather for diesel transport
Earth Lead	Anti-static	4 metres anti-static earth lead to prevent static build up
Drain	Bung	3/4" drain bung and seal
Mounting	Galvanised Pins	Galvanised steel mounting pins to suit 400 – 10,000 litre tanks
Lid	100 litre tanks	150mm diameter screw lid with spring breather valve and gasket
	200 – 600 litre tanks	250mm diesel lid complete with breather, 2 inch female inlet/outlet for pump, filler neck. Removable plate allows access to tank
	800 – 10,000 litre tanks	450mm diesel lid complete with breather, 2 inch female inlet/outlet for pump, filler neck. Removable plate allows access to tank

Active Diesel Tanks Specification Sheet

Features

We only use International Standard diesel grade poly (meets International Regulation ECE R34.01) and manufacture to dual Australian Standards (AS1940:2004 and AS2809.2:2008) making ours the highest quality, toughest and best performing diesel tank on the market

Incorporates the only approved ball baffle system with "anti-roll" technology to protect against "liquid surge" and reduce wear and tear on your truck.

Multi-function "No Spills Fill" tank lid system incorporates:

- An innovative and unique splash resistant breather system
- Pad-lockable filler cap
- Spill containment lip
- Filler cap with strainer
- Removable plate to allow access to the tank
- Earth strap to prevent static build-up

Tank Specification

Code	Tank Size (Litres)	Length (mm)	Width (mm)	Height (mm)	Weight (kg)
DTC00050L	50	800	430	390	5
DTC00100L	100	900	450	475	11
DTC00240L	240	925	710	510	17
DTC00400AL	400	1620	710	510	30
DTC00400L	400	1190	10500	530	28
DTC00600L	600	1190	1050	725	37
DTC00600AL	600	1420	1000	610	38
DTC00800L	800	1350	1200	690	55
DTC00800AL	800	1420	1000	770	65
DTC01000L	1000	1400	1200	900	65
DTC01200L	1200	1700	1320	860	70
DTC01500L	1500	1700	1320	1050	85
DTC02000L	2000	2000	1420	1070	110
DTC02500L	2500	2000	1420	1265	125
DTC03000L	3000	2340	1520	1200	170
DTC03400L	3400	2960	1450	1230	190
DTC04800L	4800	2340	1550	1880	225
DTC05000L	5000	2760	2000	1350	250
DTC06000L	6000	2760	2000	1556	300
DTC07000L	7000	3250	1920	1640	325
DTC08000L	8000	3250	1920	1890	400
DTC10000L	10000	3650	2250	1850	475

*Tank dimensions may vary slightly due to manufacturing process

Active Diesel Tanks Specification Sheet

Options



ARP005

Surefit Mounting Pins

Code	Description
ARP001	4 mounting pins to suit 400/600L Spray & FS tanks
ARP002	4 mounting pins to suit 800/1000L FS tanks
ARP005	4 mounting pins to suit 2000/2500/3000/3400/4400/4800/5000/6000L FS tanks
ARP007	8 mounting pins to suit 7000/8000/10000/13000/15000L FS tanks



Fluid 12 Volt Diesel Pump Kit – ADPF045V1K

- 45 L/min diesel pump kit
- 6 metres of 25mm anti-static delivery hose with anti-kink spring + auto shut-off nozzle
- 4 metres of power cable + battery clips
- 2 metres of 25mm suction hose
- Made in Italy
- 2 year warranty



Fluid 12 Volt Diesel Pump Kit – ADPF060V1K

- 60 L/min diesel pump kit
- 6 metres of 25mm anti-static delivery hose with anti-kink spring + auto shut-off nozzle
- 4 metres of power cable + battery clips
- 2 metres of 25mm suction hose
- Made in Italy
- 2 year warranty



Fluid 240 Volt Diesel Pump Kit – ADPF060V3K

- 60 L/min 240 volt diesel pump kit
- 6 metres of 25mm anti-static delivery hose with anti-kink spring + auto shut-off nozzle
- 2 metres of 25mm suction hose
- Made in Italy
- 2 year warranty



Dieselflo® 12 Volt 40 L/m Pump – ADPX040V1P

- 12 volt 40 litres/min open flow rate
- Improved heavy duty switch
- Redesigned integrated bypass valve
- Supplied with suction filter
- 3/4" BSP ports
- Self priming
- Reliable & compact
- 4 metres of electrical cable with battery clips

All Options not necessarily compatible

Active Diesel Tanks Specification Sheet

Options



Svelto Pump Kits – ADPT080V1K / ADPT080V2K

- 80 L/min diesel pump kit
- Available in 12 & 24 volt models
- 6 metres of 25mm anti-static delivery hose with anti-kink spring + auto shut-off nozzle
- 4 metres of power cable included
- 2 metres of 25mm suction hose
- Integrated bypass valve in pump
- Self priming for ease of use
- 4 metres of electrical cable with battery clips
- Made in Italy



Mechanical Flow Meter 4 Digit – ADFMM25D4

- 4 digit subtotal + 8 digit total
- 20-120 litres/min flow rate
- Max flow measurement 999.9 litres
- Max operating pressure - 3.5bar/50psi
- +/- 1% accuracy
- 1" ports



Digital Flow Meter 5 Digit – ADFPE25D5

- 5-digit easy to read LCD display powered by lithium battery (CR2)
- Fluid Type: For diesel, kerosene & Diesel Exhaust Fluid eg; Ad Blue™, NoNox®, Air1®
- Flow Rate: 10-100 LPM / 3-26 GPM
- Max. Operating Pressure: 72PSI / 5BAR
- Inlet/Outlet: 1"



Diesel Hose – ADZF6M20 / ADZF10M20 / ADZF6M25 / ADZF10M25

- Choose from 6 & 10 metre hose lengths
- Choose from 3/4" and 1" hose diameter
- High quality diesel grade hose with crimped fittings
- Hose kinking prevented by anti-kink spring



Heavy Duty Hose Reel – ADHR013M20 / ADHR008M25

- Choose from 13 metres of 20mm hose and 8 metres of 25mm hose
- 3/4" BSP fittings on hose
- Spring loaded retractable reel
- Heavy duty steel construction
- Hose feed guide with stopper
- 1" BSP swivel & inlet for increased flow
- Secure 4 point mounting
- Made in Italy



1" Auto Shut-Off Nozzle – ADGA25

- Supplied standard with all 60L/min pump kits

All Options not necessarily compatible

Active Diesel Tanks Specification Sheet

Options



Ball Baffles® – ARB195 / ARB355

- Small Ball Baffle \varnothing 195mm – suits 250mm lid opening
- Large Ball Baffle \varnothing 355mm – suits 450mm lid opening



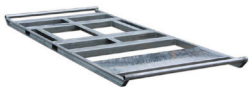
Diesel Filter Holder & Cartridge Kit – ADC30M25F

- Aluminium filter holder supplied with water & sediment filter cartridge

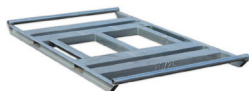


Cartridge Filter – ADC30M25C

- 30 micron filtration controls sediment
- Special water absorption technology to capture water traces in fuel



Steel Frame with
pump plate



Steel Frame without
pump plate

Steel Frames for Tanks

- Forkliftable for easy 'lift on, lift off' convenience
 - Simple to mount 'Surefit' pin system
 - Thicker wall steel coupled with unique hot dipped galvanising process provides real toughness and robustness
- *Disclaimer: Check compatibility with your forklift width between tynes.

All Options not necessarily compatible