

# FarmMax Motorised ATV Trailers

## Specification Sheet



PRAA0200L0120H

### 200 & 400 Litre ATV Trailer Fitted with Rapid Commando Pump

#### Unit Specifications

Item	Description	Details
Chassis		Fully welded RHS steel – hot dipped galvanised, chequer plate mudguards
Running Gear	Axle	200 litre: Single 4 stud axle 400 litre: Dual 4 stud axle
	Tyres	22" x 11-8 high flotation all terrain tyres
	Wheels	200 litre: 2 x R100 PR6 400 litre: 4 x R100 PR6
Towing		50mm tow hitch
Tank	200 litre	UV stabilised chemical resistant polyethylene tank with integral sump. 10 year warranty AS2070:1999 & AS4766:2006 compliant. Made in Australia
	400 litre	
Pump Set	Rapid Commando piston pump	Duplex piston pump 12 L/min 360psi. Stainless steel & brass construction. Viton seals
Motor	Honda GX35	4 stroke petrol OHC single cylinder 1.3HP
Hose Reel	30 metre	Steel manual hose reel fitted with 30m x 8mm spray hose
Drain	Bung	3/4" drain bung and seal
Outlets	1/4" NPT	2 x 1/4" NPT, 1 x spare 10mm nut and tail supplied
Filter	Suction	1/2" suction filter with 80 mesh screen filter
	Basket	18 mesh screen 210mmØ 235mm deep
Spray Gun	Turbo spray gun	Fitted with adjustable turbo atomiser, one hand operation
Lid	255mm	255mm threaded with labyrinth breather
Dimensions	200 litre PRAA0200L0120H	1850mm (L) x 1220mm (W) x 880mm (H)
	400 litre PRAA0400L0120H	2600mm (L) x 1440mm (W) x 890mm (H)

# FarmMax Motorised ATV Trailers Fitted with Rapid Commando Pump Specification Sheet

## Tank Specifications

Code	Tank Size (Litres)	Length (mm)	Width (mm)	Height (mm)	Weight (kg)
PTSP00200FG	200	970	680	530	15
PTSP00400FG	400	1200	890	600	25

## Motor Specifications

Petrol Engine Specs	Description	Power	Dry Weight	Fuel Tank Capacity	Oil Type	Oil Capacity
Honda GX35	4 Stroke OHC single cylinder	1.0kw (1.3hp) @ 7000rpm	11 kg	650ml	API SG	0.1 litres (100ml)

## Pump Specifications

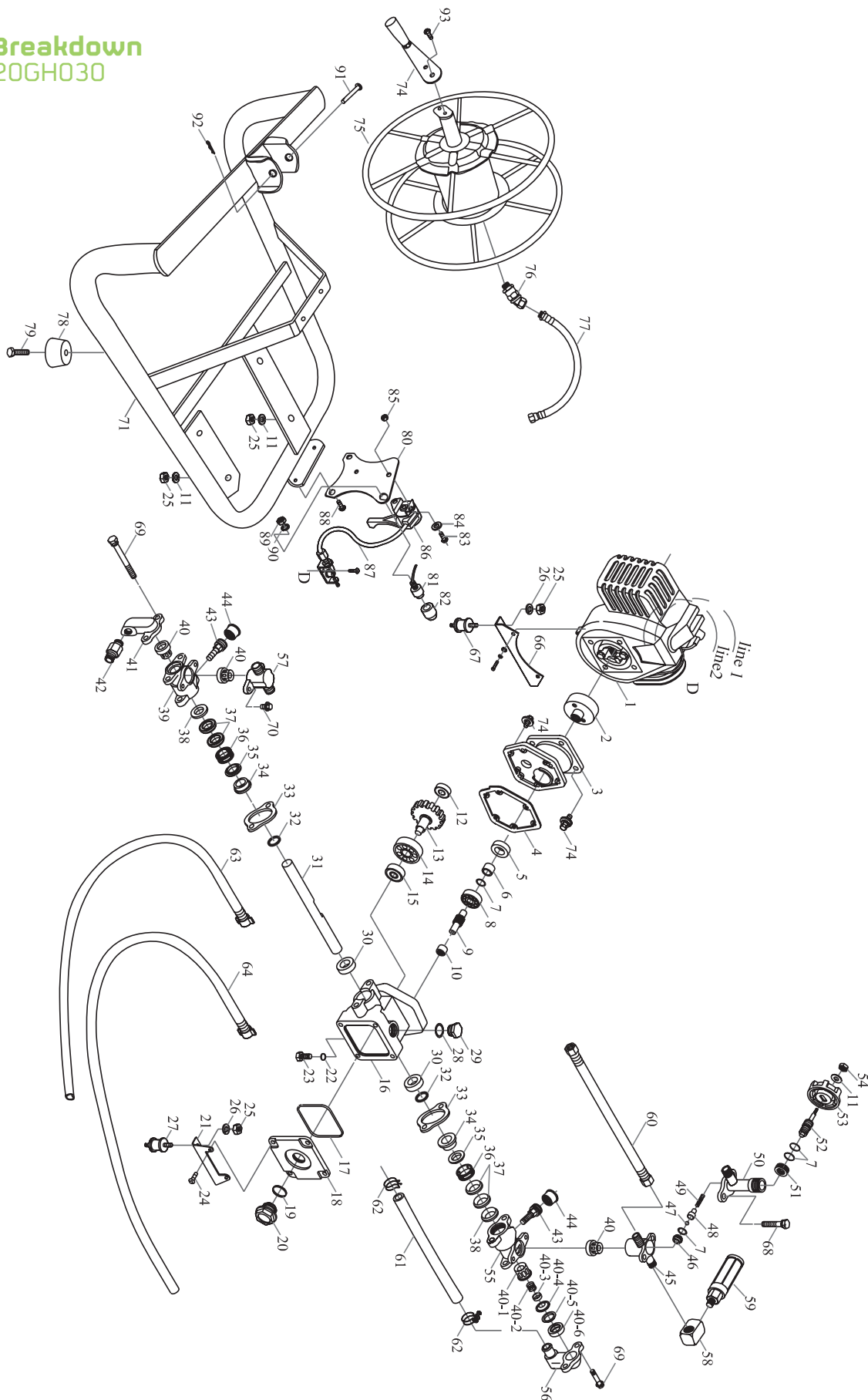
Pump Model	Description	Max.Power Pressure	Max.Flow	Oil Type	Oil Capacity	Hose Reel
Rapid Commando	Duplex Piston Pump	25bar (360psi)	12litres/min	SAE30/30W	0.1 litres (100ml)	30M x 8mm Hose

## Features

- Boom mounting brackets
- Excellent chemical resistance characteristics
- Oil level sight gauge
- Adjustable pressure control
- Anti-vibration frame mounts on pump set
- Glycerin filled pressure gauge
- Fully draining sump for easy cleaning
- Easy clean suction filter
- Hinged drawbar on 400 litre trailer
- Front pump plate
- Strong steel construction chassis, hot dipped galvanised for durability

# FarmMax Motorised ATV Trailers Fitted with Rapid Commando Pump Specification Sheet

## Parts Breakdown APP0120GH030



# FarmMax Motorised ATV Trailers Fitted with Rapid Commando Pump Specification Sheet

## Parts List APP0120GH030G

No.	Part Name	Size	Per. Set
1	Engine GX35		1
2	Clutch Drum		1
3	Gearbox housing		1
4	Housing Gasket		1
5	Oil seal	17.28.7	1
6	Steel Spacer		1
7	O-ring	9x13	4
8	Bearing 6201		1
9	Shaft		1
10	Bearing HK1010		1
11	Washer		2
12	Bearing 608		1
13	Gear shaft		1
14	Bearing 6203		1
15	Bearing 6200		1
16	Crank case	18mm	1
17	O-ring	G60	1
18	Crank case cover		1
19	O-ring	G25	1
20	Oil glass		1
21	Pump stand		1
22	O-ring		1
23	Drain plug		1
24	Screw	M6x12	6
25	Nut	M6	4
26	Spring washer	M6	8
27	Rubber Mount		2
28	O-ring		1
29	Oil Filler Cap		1
30	Oil seal		2
31	Plunger	18mm	1
32	O-ring		2
33	Fixed plate	2mm	2
34	Adjusting ring		2
35	Grease ring		2
36	U-packing upper seal		2
37	U-packing		4
38	Packing seat		2
39	Cylinder Head LEFT		1
40	Valve Assembly		4
40-1	Valve nut		1
40-2	Valve spring		1
40-3	Valve plug		1
40-4	Valve seat		1
40-5	Valve ring		1
40-6	Valve packing		1
41	Suction Manifold LEFT		1

No.	Part Name	Size	Per. Set
42	Connector Nipple		1
43+44	Grease cup		2
45	Outlet Manifold		1
46	Regulator seat		1
47	Regulator ball		1
48	Regulator ball cup		1
49	Regulator Spring		1
50	Regulator valve Housing		1
51	Regulator Housing Nut		1
52	Regulator valve screw		1
53	Regulator knob		1
54	Nyloc nut	M6	7
55	Cylinder head RIGHT		1
56	Suction Manifold RIGHT		1
57	Outlet manifold LEFT		1
58	Elbow 1/4NPT		1
59	Pressure gauge		1
60	Pressure Manifold Hose		1
61	Suction manifold hose		1
62	Hose clamp		2
63	Overflow hose		1
64	Suction hose		1
66	Engine stand		1
67	Rubber Mount		2
68	Screw	M6x45	2
69	Screw	M6x75	2
70	Screw	M6x12	2
71	Frame		1
74	Screw	M6x16	10
75	Hose Reel Spool		1
76	Hose reel swivel		1
77	Hose reel whip hose		1
78	Rubber Foot		4
79	Screw	M8*25	4
80	Throttle mounting plate		1
81	Hill switch		1
82	Rubber sheath		1
83	Screw	3/16"x3/8"L	2
84	Washer	3/16"	2
85	Nut	3/16"	2
86	Throttle		1
87	Throttle Cable comp		1
88	Screw		2
89	Washer		2
90	Nut		2
93	Screw		2
94	Screw		2

# FarmMax Motorised ATV Trailers Fitted with Rapid Commando Pump Specification Sheet

## Options



### Poly Booms - ABP030/ABP040

- Tough polyethylene provides excellent impact resistance
- Nozzle guards provide excellent protection
- Heavy duty construction for durability
- UV stabilised for long outdoor life
- Non-drip nozzle holders with 110° nozzles
- Positive action breakaway
- Lightweight for easier handling
- Proven corrosion and chemical resistance
- Reinforced mounting points
- Comes complete with nozzles, hoses and mounting brackets
- Strong one piece truss design for durability, impact and crack resistance



### Versatile Boom – ABVL040

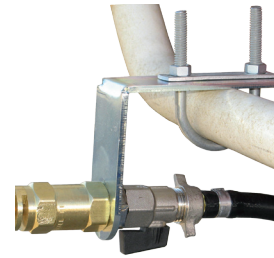
- 1.2 metre compact boom
- Sprays 4 metre swath width
- Compatible with any spot sprayer with pump - 7.5 litre/m or more
- Taps for 7 way nozzle control
- Versatility of spraying options
- Non-drip ball check filters

### Single Sided Mini Foam Marker Kit – ATF004S

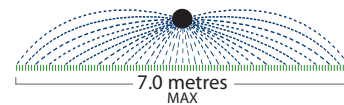
- Complete with 4L tank
- Single dropper assembly with mounting bracket
- Stainless steel compressor housing
- Built-in 12v rechargeable battery
- Battery charger
- 4 metres of hose
- Bottle of foam concentrate
- Replacement dropper sponge
- Ready to go right out of the box!  
Just plug it in and charge it up! Use the supplied foam concentrate and add water – Away you go!



- All Options not necessarily compatible

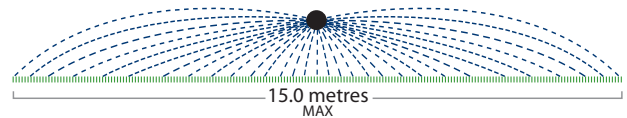


### Boomless Nozzle Kit #2 Nozzle – ABK02



- Up to 37 litres/hectare
- Minimum pump capacity 7 litres/min

### Boomless Nozzle Kit #5 Nozzle – ABK05



- Up to 74 litres/hectare
- Minimum pump capacity 11 litres/min