

# Genius™ Diesel Units Specification Sheet



## 100 – 1200 Litre Diesel Units

### Unit Specifications

Item	Description	Details
Tank	100 – 1200 litre	Tanks manufactured from specifically formulated diesel grade UV stabilised polyethylene meeting ECE R34.01 & AS 1940-2004, AS 2809.2-2008 requirements. 10 year warranty
Pump	Fluid 12 volt	Rotary electric vane pump, 45 litre/min flow rate, self priming, integrated suction filter & bypass valve. Made in Italy. 2 Year warranty
Hose	Delivery	45 litre/min – 6 metres of 20mm anti-static delivery hose with anti-kink spring
	Suction	2 metres of 25mm suction hose
Filler Cap		Pad lockable filler cap with strainer & safety chain. #50 mesh filter
Breather		Specifically designed splash resistant breather
Nozzle	ADGA20	3/4" auto shutoff fuel dispensing nozzle
Ports		1" BSP ports
Power Source	12 volt	4m of electrical cable with battery clips and fuse
Mounting		4 x M10 brass inserts in base of tank
Filtration	Three stage	Lid strainer, foot filter, pump strainer
Drain	Bung	3/4" drain bung
Earth Lead	Anti-static	4 metres anti-static earth lead

1

# Genius™ Diesel Units Specification Sheet

## Tank Specifications

Code	Tank Size (litres)	Length (mm)	Width (mm)	Height (mm)	Weight (kg)
DULO100LF045V1	100	800	680	465	30
DULO200ALF045V1	200	800	680	710	36
DULO200LF045V1	200	1150	820	565	39
DULO300LF045V1	300	1290	600	770	42
DULO400LF045V1	400	1150	820	780	45
DULO400ALF045V1	400	1290	600	965	47
DULO450LF045V1	450	1700	880	620	49
DULO600LF045V1	600	1700	880	740	65
DULO800LFB045V1	800	1700	1000	860	85
DUL1000LFB045V1	1000	1700	1000	1025	95
DUL1200LFB045V1	1200	1700	1000	1190	112

## Pump Specifications

Pump Model	Description	Flow	Current (nom.A)	Current max.A (Bypass)	Duty Cycle	Port
Fluid 12 Volt ADPF045V1P	12 volt rotary electric vane pump	45 L/min open flow	19	22	40 mins	1" BSP
Fluid 12 Volt ADPF060V1P	12 volt rotary electric vane pump	60 L/min open flow	19	25	40 mins	1" BSP
Fluid 24 Volt ADPF060V2P	24 volt rotary electric vane pump	60 L/min open flow	11	18	40 mins	1" BSP
DieselFlo ADPX040V1P	12 volt rotary electric vane pump	40 L/min open flow	12	20	30 mins	3/4" BSP
Svelto 12 Volt ADPT080V1P	12 volt rotary electric vane pump	80 L/min open flow		58	30 mins	1 1/4" BSP
Svelto 24 Volt ADPT080V2P	24 volt rotary electric vane pump	80 L/min open flow		58	30 mins	1 1/4" BSP

## Features

- Consistently higher nozzle flow rates saves refuelling time
- Anti-theft mounting system included on all units
- 3 stage locking system for security
- Auto shut-off nozzle prevents overfilling
- Unique, slim, compact design with in-built carry handles for "carry anywhere convenience"
- Clean fuel every time with Rapid's dual strainer filtration system

\* Disclaimer: Tank dimensions may vary slightly due to the manufacturing process

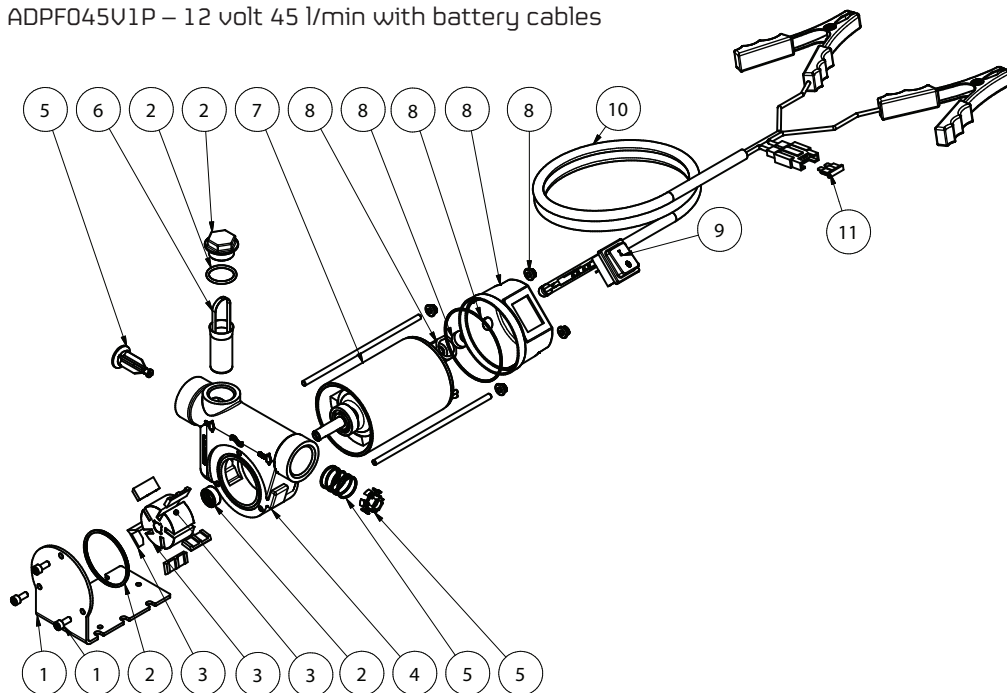
Freecall 1800 011 000  
www.rapidspray.net



# Genius™ Diesel Units Specification Sheet

## Parts Breakdown – FLUID

ADPF045U1P – 12 volt 45 l/min with battery cables



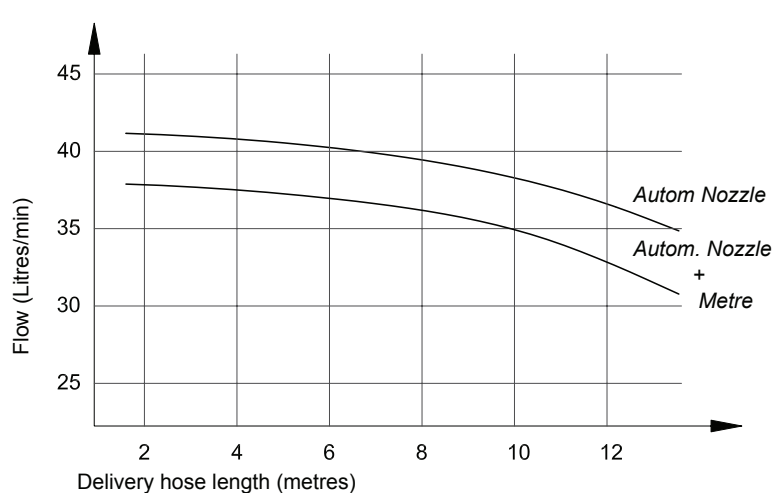
### Parts List

No.	Part Name	Per. Set	Code
1	Bracket & Screw Kit	1	CRF695000
2	Gaskets Kit	1	CRF695001
3	Rotor & Vanes Kit	1	CRF695002
4	Pump Body 40L	1	CRF210001
5	By-pass Valve Kit	1	CRF695003
6	Strainer	1	CRF217001
7	24 Vcc Motor	1	CRF460002

No.	Part Name	Per. Set	Code
7	12 Vcc Motor	1	CRF460001
8	Switch Cover Kit	1	CRF695004
9	Switch	1	CRF425001
10	Cord 2x2,5-2mt. + Clamps	1	CRF400001
10	Cord 2x4-4mt. + Clamps	1	CRF400003
11	15A fuse (24Vcc motor)	1	CRF450002
11	25A fuse (12Vcc motor)	1	CRF450001

## Flow Curve

ADPF045U1P – 45 l/min

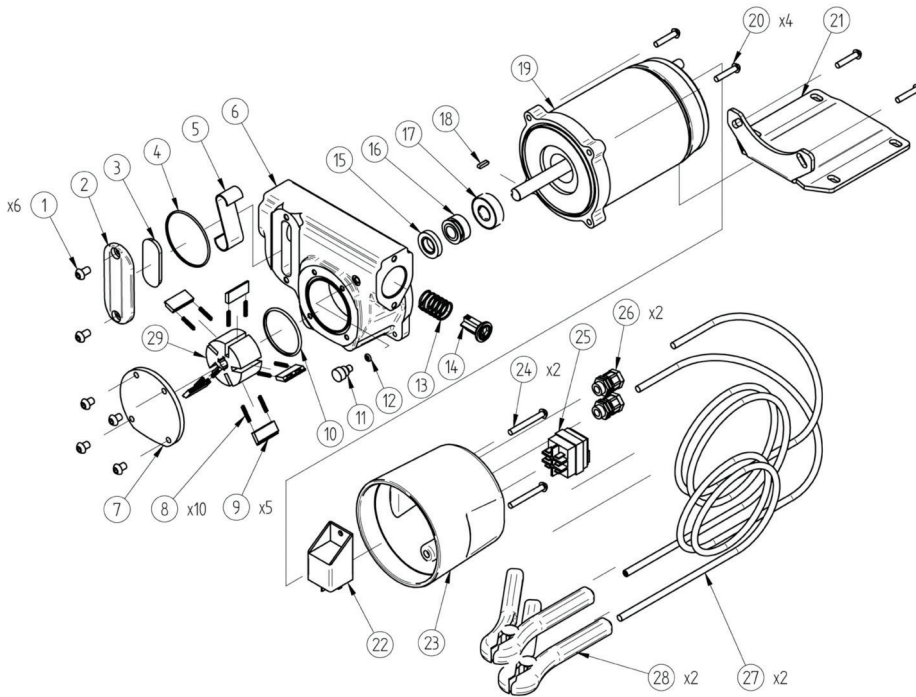


# Genius™ Diesel Units Specification Sheet

## Parts Breakdown – SUELTO

ADPT080V1P – 12 volt 80 l/min with battery cables

ADPT080V2P – 24 volt 80 l/min with battery cables



## Parts List

No.	Part Name	Per. Set
1	Screw 6x8	6
2	Filter Cover	1
3	Rubber Seal	1
4	O-ring	1
5	Filter Screen	1
6	Pump Body	1
7	Pump Cover	1
8	Vane Spring	10
9	Vane	5
10	O-ring	1
11	Knob	1
12	O-ring	1
13	By-pass Spring	1
14	By-pass	1
15	Fixed Seal	1
16	Seal	1
17	Bearing	1
18	Key	1
19	Motor	1
20	Screw 5 x 25	4
21	Base	1
22	Relay	1
23	Motor Cover	1
24	Screw 5 x 40	2
25	Switch	1
26	Glands	2
27	Leads	2
28	Alligator clips	2
29	Rotor	1

## Options



### Fluid 12 Volt Diesel Pump Kit – ADPF060V1K

- 60 L/min diesel pump kit
- 6 metres of 25mm anti-static delivery hose with anti-kink spring + auto shut-off nozzle
- 4 metres of power cable + battery clips
- 2 metres of 25mm suction hose
- Made in Italy
- 2 year warranty



### Fluid 240 Volt Diesel Pump Kit – ADPF060V3K

- 60 L/min 240 volt diesel pump kit
- 6 metres of 25mm anti-static delivery hose with anti-kink spring + auto shut-off nozzle
- 2 metres of 25mm suction hose
- Made in Italy
- 2 year warranty



### Dieselflo® 12 Volt 40 L/m Pump – ADPX040V1P

- 12 volt 40 litres/min open flow rate
- Improved heavy duty switch
- Redesigned integrated bypass valve
- Supplied with suction filter
- 3/4" BSP ports
- Self priming
- Reliable & compact
- 4 metres of electrical cable with battery clips



### Svelto Pump Kits – ADPT080V1K / ADPT080V2K

- 80 L/min diesel pump kit
- Available in 12 & 24 volt models
- 6 metres of 25mm anti-static delivery hose with anti-kink spring + auto shut-off nozzle
- 4 metres of power cable included
- 2 metres of 25mm suction hose
- Integrated bypass valve in pump
- Self priming for ease of use
- 4 metres of electrical cable with battery clips
- Made in Italy



### Diesel Filter Holder & Cartridge Kit – ADC30M25F

- Aluminium filter holder supplied with water & sediment filter cartridge



### Forkable Galvanised Steel Frames

- Easy to load convenience
- Strong hot dip galvanised steel construction
- Bolts directly to tank for secure mounting
- Anti-theft

All Options not necessarily compatible

# Genius™ Diesel Units Specification Sheet

## Options



### Mechanical Flow Meter 4 Digit – ADFMM25D4

- 4 digit subtotal + 8 digit total
- 20-120 litres/min flow rate
- Max flow measurement 999.9 litres
- Max operating pressure - 3.5bar/50psi
- +/- 1% accuracy
- 1" ports
- Fits all Genius units 400L and larger



### Genius Fuel Level Gauge – ADLM10M

- Easy to read fuel level gauge
- Fits neatly beside filler cap



### Digital Flow Meter 5 Digit – ADFPE25D5

- 5-digit easy to read LCD display powered by lithium battery (CR2)
- Fluid Type: For diesel, kerosene & Diesel Exhaust Fluid eg; Ad Blue™, NoNox®, Air1®
- Flow Rate: 10-100 LPM / 3-26 GPM
- Max. Operating Pressure: 72PSI / 5BAR
- Inlet/Outlet: 1"
- Fits all diesel units



### Diesel Hose – ADZF6M20 / ADZF10M20 / ADZF6M25 / ADZF10M25

- Choose from 6 & 10 metre hose lengths
- Choose from 3/4" and 1" hose diameter
- High quality diesel grade hose with crimped fittings
- Hose kinking prevented by anti-kink spring



### Heavy Duty Hose Reel – ADHR013M20 / ADHR008M25

- Choose from 13 metres of 20mm hose and 8 metres of 25mm hose
- 3/4" BSP fittings on hose
- Spring loaded retractable reel
- Heavy duty steel construction
- Hose feed guide with stopper
- 1" BSP swivel & inlet for increased flow
- Secure 4 point mounting
- Made in Italy



### 1" Auto Shut-Off Nozzle – ADGA25

- Supplied standard with all 60l/min pump kits



### Ball Baffles® – ARB195 / ARB355

- Small Ball Baffle  $\varnothing$ 195mm – suits 250mm lid opening
- Large Ball Baffle  $\varnothing$ 355mm – suits 450mm lid opening

All Options not necessarily compatible

## Options

### Enviro Genius™ Diesel Bund for 400L Genius Diesel Units



ADB004000G



### Dimensional Drawing – ADB004000G

Add this bund to your 400 litre genius for extra environmental protection

