

# SILVER SELECTION TRAILER SPRAYERS

## MOWER TRAILERS

### SPECIFICATION SHEET



SVT0055L0077B2

## 55 & 95 LITRE SPRAYERS

### UNIT SPECIFICATIONS

ITEM	DESCRIPTION	DETAILS
TANK	55 Litre 95 Litre	UV stabilised polyethylene tank. Made in USA
PUMP	Delavan 12 volt (7.5 L/min 60psi)	Delavan 3 chamber positive displacement diaphragm pump. 7.5 L/min open flow 400kpa (60psi), demand switch, viton valves, santoprene diaphragm. Capable of being run dry. Made in USA
PRESSURE REGULATOR	Pressure relief valve	400psi max operating pressure with 1/2" inlet port (MPT) and 3/4" FPT discharge. Polypropylene and brass construction. 100psi dry pressure gauge with bottom mount. 1/4" MNPT fitting
FILTER		10mm suction foot filter
SPRAY LANCE	Powerjet	Powerjet spray gun with stainless steel ball & seat and brass housing. Overall length 700mm. Max pressure 20 bar 300psi. Adjustable spray nozzle and 10mm hosetail
SPRAY HOSE	4.5 metres x 10mm agricultural spray hose	High flexibility, kink resistant spray hose
LID	150mm	150mm screw lid with tether
POWER SOURCE	12 volt	2.4 metre 12 volt electrical leads with switch and alligator clips
DRAIN	Drain plug	Threaded drain cap with seal and anti-loss strap
WHEELS & TYRES	10" tyre and wheel assembly	2 ply tyres with "turf tread", 5/8" ID steel ball bearing, 4" rim, 2-5/8" tread width, 2 1/4" hub width, pneumatic tyres
TRAILER FRAME	ATK055095T	Powder coated steel frame
BOOM	2 metre	Fitted with deflector type spray nozzles at 1 metre spacings. Powder coated steel construction.

**TRAILER SPECIFICATIONS**

CODE	TANK SIZE (LITRES)	LENGTH (mm)	WIDTH (mm)	HEIGHT (mm)	WEIGHT (kg)
SVT0055L0077B2	55	1380	1050	730	28
SVT0095L0077B2	95	1380	1050	820	29

**PUMP SPECIFICATIONS**

PUMP MODEL	MOTOR	LIQUID TEMP	PRIMING CAPABILITIES	MAX PRESSURE	HOUSING	VALVES	DIAPHRAGM	FASTENERS	WEIGHT (kg)
APD0077T10E	12 VDC Permanent magnet, totally enclosed, non-ventilated	60°C	4m	100psi (7 bar)	Polypropylene	Viton	Santoprene	Stainless steel & zinc plated	2.7

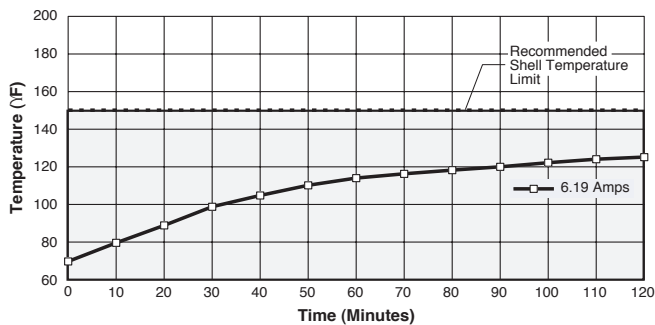
**FEATURES**

- Tanks calibrated for easy measurement of contents
- Easy cleaning tank design with drain plug
- Spray lance clips for secure lance storage
- Lid comes complete with anti-loss strap
- Fitted with pressure regulator and gauge for accurate spray control
- Powerjet spray gun with adjustable brass nozzle for accurate spraying
- 2 metre boom standard. Can be optioned with 3 or 4 metre boom
- Spare parts available for all sprayers and booms
- Pneumatic tyres
- Made in the USA

**PUMP PERFORMANCE – APD0077T10E 7.5 L/MIN 60PSI**

PSI	LPM	Amps
10	7.6	2.8
20	6.4	3.7
30	6.0	4.2
40	5.9	4.7
50	4.7	5.2
60	4.0	5.7

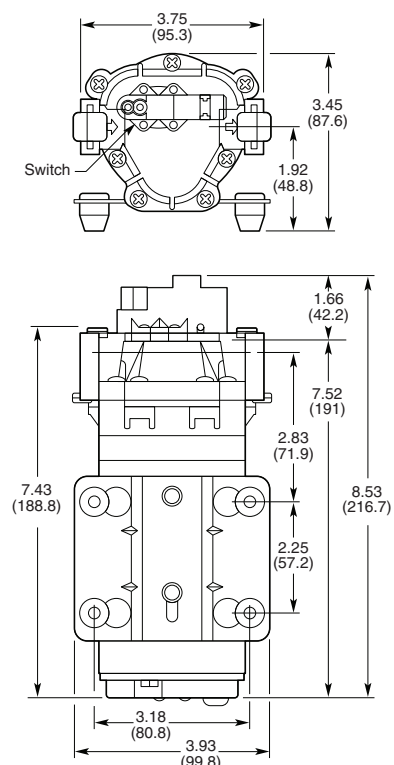
**HEAT RISE**



Approximate values, actual values will vary with ambient temperature.

**DIMENSIONS**

APD0077T10E 7.5 L/MIN 60PSI



## OPTIONS

### SILVER SELECTION BOOMS

CHOOSE ANY OF THESE BOOMS TO COMPLETE YOUR SPRAY PACKAGE

- 3 sizes: 2 metre, 3 metre and 4 metre spray width
- Fitted with deflector type spray nozzles at 1 metre spacings
- 3 metre & 4 metre booms have spring loaded positive action breakaway and vertical fold capacity
- Powder coated steel construction
- Some assembly required



Vertical fold capability



95 Litre trailer sprayer with 2M boom

### DELANVAN PUMP SPARE PARTS KITS

Spare parts available for all 12 volt pumps



12 VDC MOTOR with ball bearings on both ends of shaft

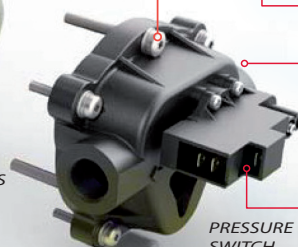


SANTOPRENE DIAPHRAGM



VITON VALVES

STAINLESS STEEL FASTENERS



PRESSURE SWITCH

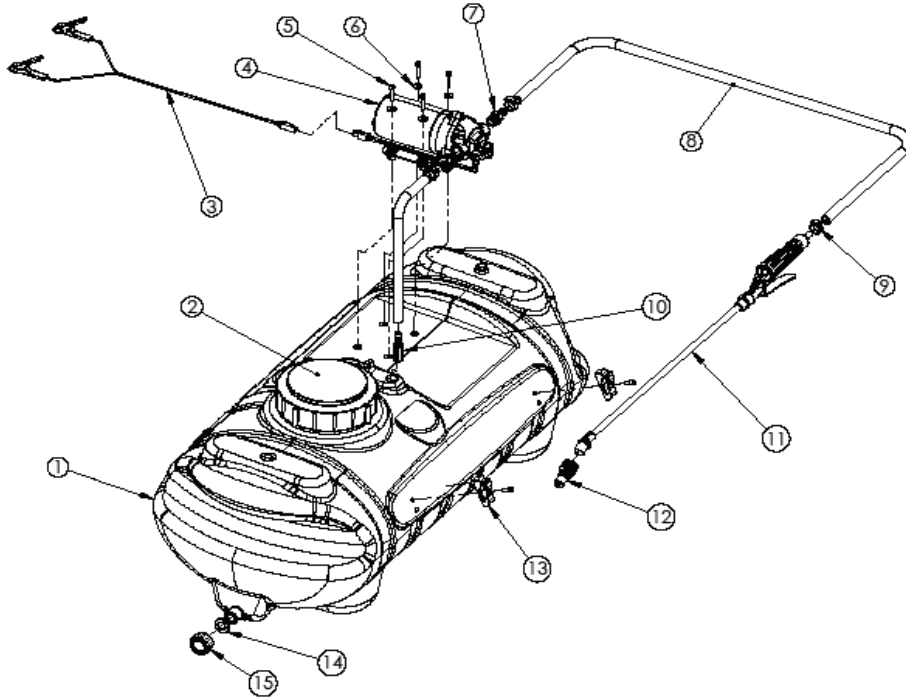
CODE	DESCRIPTION
CDPLHA78607E77	Lower housing assy - for 7801 pumps - Diaphragm
CDPLHA78637F77	Lower housing assy - for 7802 pumps - Diaphragm
CDP53LHA002	Lower housing assy - for 7800 pumps - Geolast Diaphragm

CODE	DESCRIPTION
CDPVHA78637F77	Valve housing assy for 7800 pumps

CODE	DESCRIPTION
CDPUHA78637F77	Upper housing assy for 7800 pumps
CDPUHA78637F77T	Upper housing assy for 7812 pumps

CODE	DESCRIPTION
CDP7800PSW60	Pressure switch only - to suit 7800 series pumps
CDP7800PSW100	Pressure switch only - to suit 7802 100psi pumps

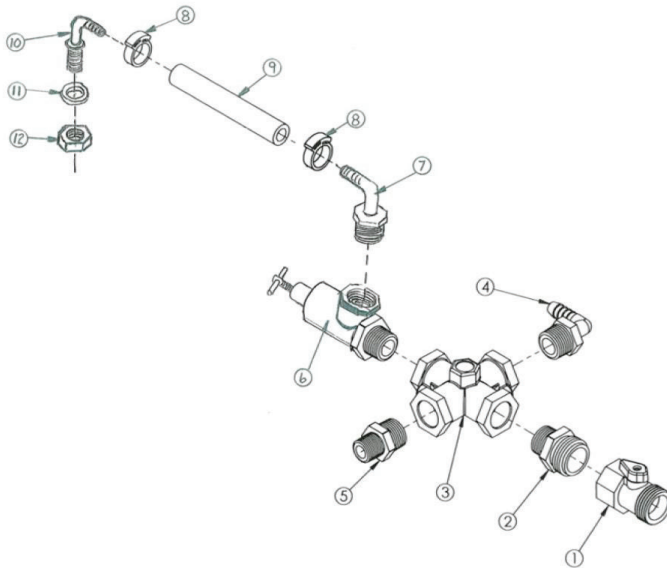
**PARTS BREAKDOWN – SVS0055L0077 / SVS0095L0077**



**PARTS LIST**

No.	PART No.	DESCRIPTION	PER. SET
1	33-103231	Tank 55 litre	1
	33-103230	Tank 95 litre	1
	33-103245	Tank 150 litre	1
	33-103246	Tank 225 litre	1
2	ARLP150AT	Lid, Tank	1
3	ATCWL02412VSA	Harness, wire, SS	1
4	APD0038	Pump, Delavan 3.8 L/min (40psi)	1
	APD0077T10E	Pump, Delavan 7.7 L/min (60psi)	1
5	33-103126	Screw, machine 10-24 x 5/8, 3.8 LPM pumps	4
	33-103127	Screw, machine 10-24 x 1", 7.7 LPM pumps	4
6	33-103131	Washer #10, 7.7 LPM pumps only	4
7	A38	Fitting, 3/8" MNPT x 3/8" HB 7.7 LPM pumps	2
8	3204-1407	Hose, rubber, 3/8"	4.5 metres
9	SHC-F	Clamp, hose	3
10	33-103121	Strainer, inlet	1
11	AHL009	Wand with filter	1
12	CPLP009N	Nozzle, assembly	1
13	CHCLP12MMX2	Clip, Gun (pair)	1
14	W406-V	Washer, Garden hose	1
15	ATPVC20T	Cap, Garden hose	1
	3204-1407	Hose, rubber, 3/8", intake, 15/55 (G/L) & 25/95 (G/L) tanks	533mm
	3204-1407	Hose, rubber, 3/8", intake, 40/150 (G/L) & 60/225 (G/L) tanks	711mm

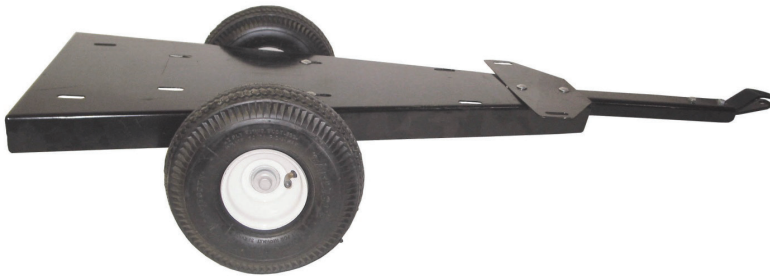
**MANIFOLD SYSTEM SUIT – SVS0055L0077 / SVS0095L0077**



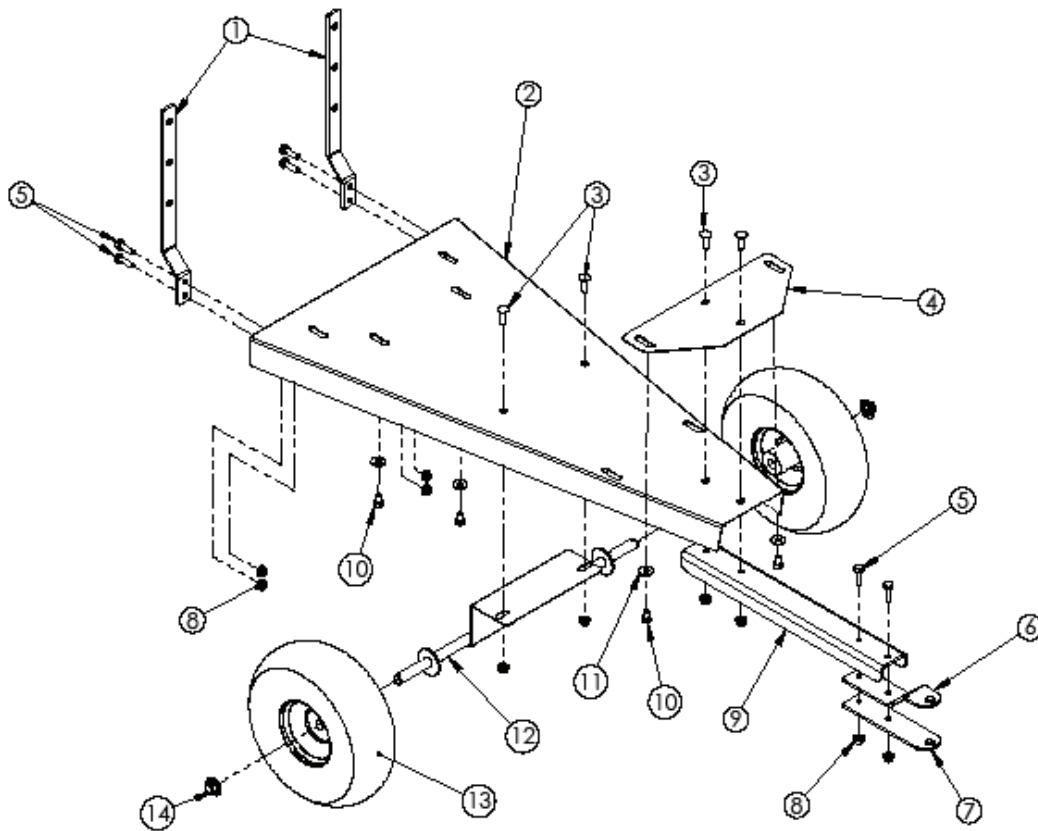
**PARTS LIST**

No.	PART No.	DESCRIPTION	PER. SET
1	CFVBP025M025F	Valve, garden hose	1
2	CFNE20M12B	Adaptor, 1/2" MPT X 3/4" garden hose thread	1
3	CVPGCR1214	Cross, 1/2" FMPT x 1/4" gauge port	1
4	CFNE12M10B	Elbow, 1/2" MNPT x 3/8" HB	1
5	CFNN12M10M	Adaptor, 1/2" MNPT x 3/8" MNPT	1
6	ATRV400PT12	Pressure regulator	1
7	CFNE20M10B	Elbow, 3/4" MNPT x 3/8" HB	1
8	CFCIP10	Hose clamp	2
9	33-103153	Hose, 3/8"	355mm
10	NTL38-C	Nozzle fitting x 3/8" HB	1
11	CFWFE25X14X3	Washer	4
12	B12	Nut, 11/16"	1

**55 & 95 LITRE LAWN TRAILER KIT – ATK055095T**



**PARTS BREAKDOWN – ATK055095T**



**PARTS LIST – ATK055095T**

No.	PART No.	DESCRIPTION	PER. SET
1	31-100119	Boom Mount	2
2	31-100116	Frame	1
3	33-100112	Carriage bolt, 5/16-18 x 1"	4
4	31-100115	Front tank mount(For 25 gallon tank)	1
5	33-100116	Bolt, 5/16-18 x 1"	6
6	31-100121	Top Hitch plate	1
7	31-100138	Bottom hitch plate	1
8	33-100113	Nut, serrated, 5/16"	10
9	31-100114	Tongue, 15&25 gallon sprayer	1
10	33-100114	Bolt, 5/16-18 x 1/2"	4
11	33-100115	Washer, 5/16	4
12	32-100019	Axel, 15&25 gallon sprayer	1
13	ATPVW055	Tire Assembly 10"	2
14	PW-625019-50H	Push nut	2