



# GREENMAX SPRAY TRAILER

## OPERATORS HANDBOOK



## CONTENTS

- 01** Introduction
- 02** Warnings
- 03** Product Risk Assessment
- 05** Hitching to Vehicle
- 06** GreenMax Spray Trailer Unit Controls
- 08** Pressure & Spray Controls
- 09** Fill Tank Controls
- 11** Agitate Tank Mix & Begin Spraying
- 13** Flush Pump & Plumbing System
- 15** Cleaning & Maintenance
- 17** Bertolini Poly 2073
  - Troubleshooting
  - Pump Breakdown & Parts
- 22** Honda GX200 Engine
- 23** Warranty
  - Registration

## INTRODUCTION

**Congratulations on your purchase of a Rapid Spray GreenMax Spray Trailer** designed for the efficient and quick application of agricultural chemicals via boom spraying or spot spray gun.

NOTE: Your GreenMax Spray Trailer may differ in appearance to what is depicted in this Operators Manual.



## WARNINGS

- 1.** When mounting to any vehicle/tractor, ensure that you have read the Vehicle Owner's Manual and that you comply with all the weight restrictions as specified by the vehicle manufacturer, as overloading can cause injury or death.
- 2.** To ensure your own safety and that of your employees, you must comply with all relevant environmental and work place health and safety regulations and codes of practice.
- 3.** Select and wear the appropriate Personal Protection Equipment in accordance with the label of the product you intend on using and your own safe work practices.
- 4.** Care should be taken when spraying in windy conditions as spray drift may contaminate the air and may effect the operator or damage adjacent non-target vegetation.
- 5.** Once the spraying operation has been completed, decontaminate the spray tank and spray accessories. Dispose of rinsing's in compliance with current environmental and work place health and safety regulations.
- 6.** Personal Protection Equipment must still be worn while decontaminating your hose reel as per warning 3. above.
- 7.** Improper or careless use of this sprayer can cause serious injury. Minors should never be allowed to use this sprayer. This sprayer should not be used when bystanders or animals are in the area. This sprayer should never be used while children are in the area.
- 8.** Never leave the sprayer unattended without turning off the engine and relieving the line pressure, and flushing the sprayer of any harmful chemicals.
- 9.** You must be in a good mental health to operate this sprayer and not be under the influence of alcohol or any drugs that could impair your vision, physical strength, dexterity, judgment or mental capacity.
- 10.** No modifications and/or alterations may be made to this sprayer. Any such modifications not only void the sprayer warranty but can make the unit dangerous to anyone operating the pump.
- 11.** Always inspect hoses and piping to avoid burst injuries.

## PRODUCT RISK ASSESSMENT

TASK	HAZARDS	RISK	CONTROL MEASURES
1. Partially fill the tank with water	Reaching & handling; slips, trips or falls; fingers jammed; pressure blow; electrocution;	Med	Concentrate on task; follow safe manual handling techniques; don't lift > 20kg if on your own, bend knees and keep back straight; keep fingers clear; no loose clothing; keep unit at least 8m away from overhead powerlines; fire extinguisher nearby; follow warning stickers on tanks; check hoses; keep substances away from electrical sources.
2. Check weather and select the appropriate PPE to suit the chemicals to be used.	Manual handling; slips, trips and falls.	Low	Put on PPE as per the chemical requirements in the Material Safety Data Sheet - coveralls, gloves, safety, footwear, glasses and respirator; follow safe manual handling procedures: as above.
3. Mix chemicals and fill spray tank units.	As above; spray drift, chemical spillage, emission of vapours or flammability; weather; untrained visitors.	Med	As above; user trained in the state's chemical mixing and administration course e.g. Chem Cert; follow the relevant Environment Protection Authority requirements, fire extinguisher present; keep visitors away from the job unless wearing full PPE.
4. Use spray unit.	As above; loss of load; work in heat and cold; noise; exceed load limit of vehicle; run over by unit when in use.	High	As above; wear clothes to suit heat & cold; wear hearing protection if pump noise > 85 dBA; follow manufacturer's safe operation instructions for the vehicle and the spray unit; don't overload-water weighs 1kg per 1 litre; secure load to vehicle; hose tidy; brakes on when vehicle stopped.
5. Clean up, maintenance and storage.	As above;	Low	As above; continue to wear PPE for clean up, store tank in a dry, well ventilated area.
6. Honda GX200			See Honda GX200 'Operator's Handbook' for full engine risk assessment.
7. Bertolini Poly 2073 Pump			See Bertolini Poly 2073 Pump 'Operator's Handbook' for full pump risk assessment.



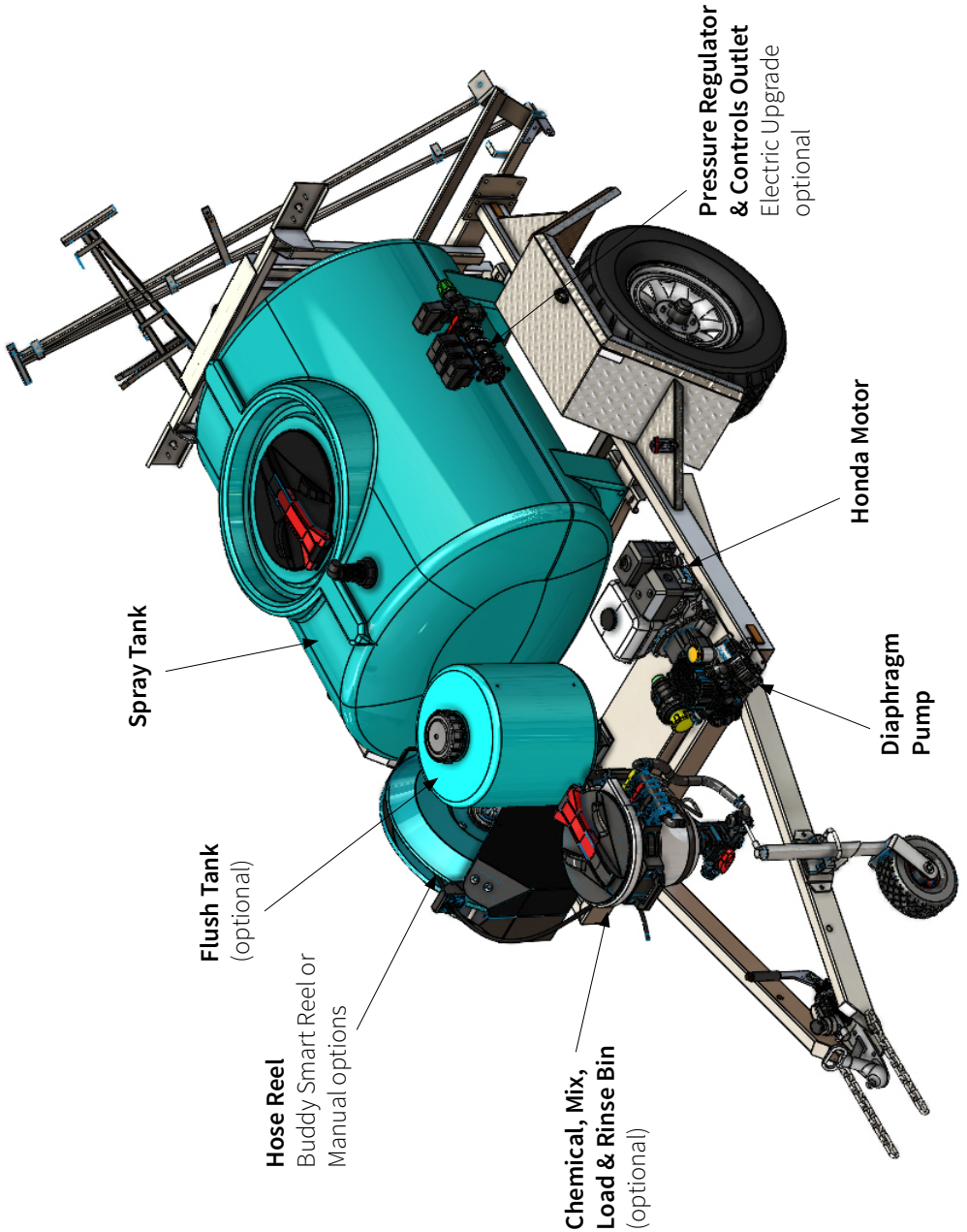
## HITCHING TRAILER TO VEHICLE

When mounting to any vehicle/tractor, ensure that you have read the Vehicle Owner's Manual and that you comply with all the weight restrictions as specified by the vehicle manufacturer, as overloading can cause injury or death.

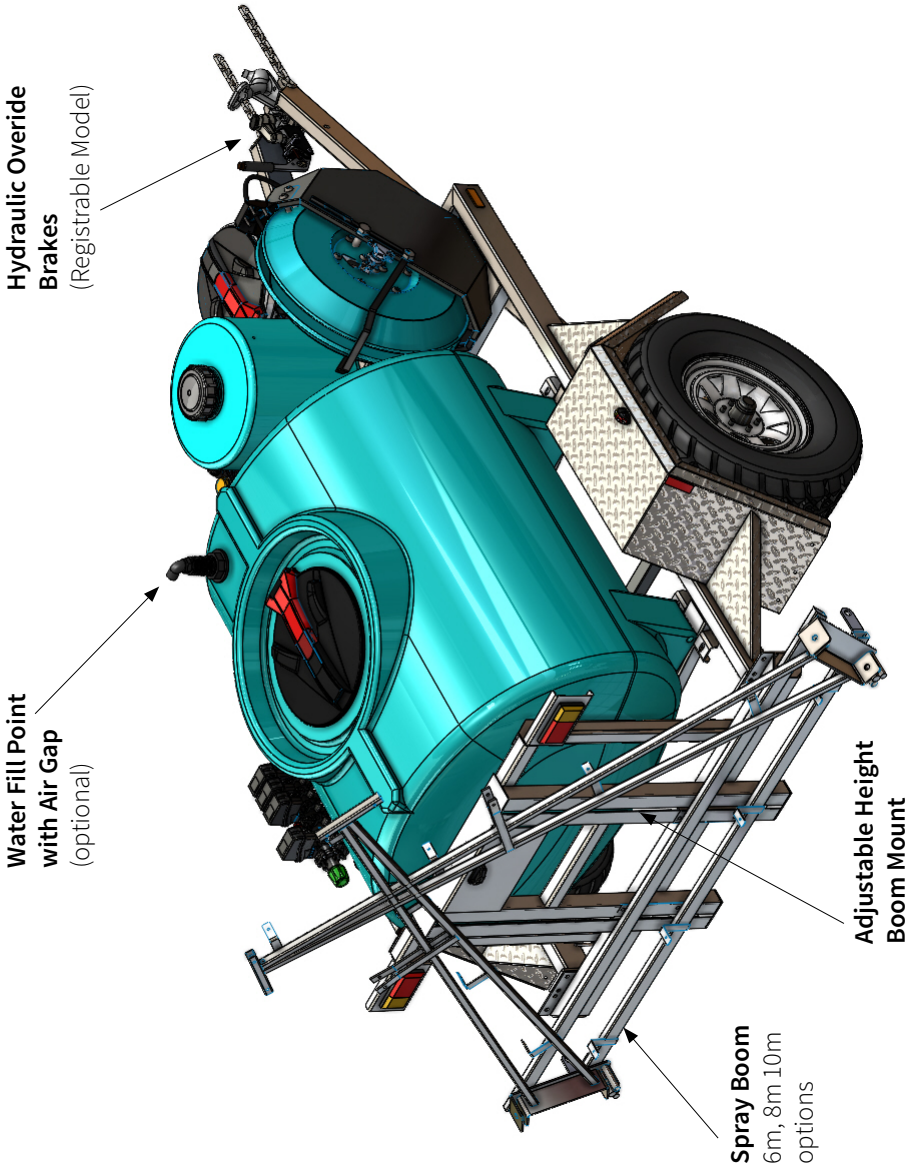
- 1.** Line the trailer up with the tow ball of the vehicle. Have the trailer higher than the height of the tow ball so that you can lower the trailer down onto the tow ball rather than lift up.
- 2.** Lower the coupling down gently, ensuring that it is lining up correctly and in the right position to sit squarely over the tow ball. Once the coupling has dropped down onto the ball securely, ensure the locking latch is dropped down into position. The trailer is now securely locked to the tow ball.
- 3.** While releasing the locking lever, pull the brake lever back toward to trailer to release the trailer brakes. The emergency brakes are now disconnected.
- 4.** Using D shackles, hook the chain through and screw the bolt into the shackle to secure. Do not tow the unit without the safety chain set up correctly.
- 5.** Ensuring you have the correct adapters if needed and that the electric cable is long enough to suit the trailer and tow vehicle, connect the clip in securely and clip the latch to secure the connection.
- 6.** Wind the jockey wheel back in. Fold the jockey wheel up and latch in place.
- 7.** Before operating, double-check all the connections to ensure the lights work as they should.



# GREENMAX SPRAY TRAILER







# PRESSURE & SPRAY CONTROLS

**WARNING:** Always stop and start the engine with the bypass lever in the 'BYPASS' position. Only open mix bin lid when mix bin operation is required.

## Manually Controlled Outlets

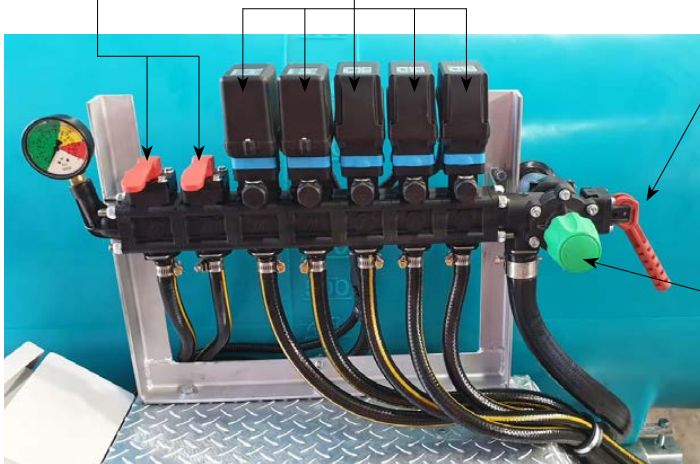
Hose Reel / Bin Mix

## Remote Control Boom Sections and Nozzle Outlets

(see wireless remote)

OPEN  
↑  
↓  
CLOSE

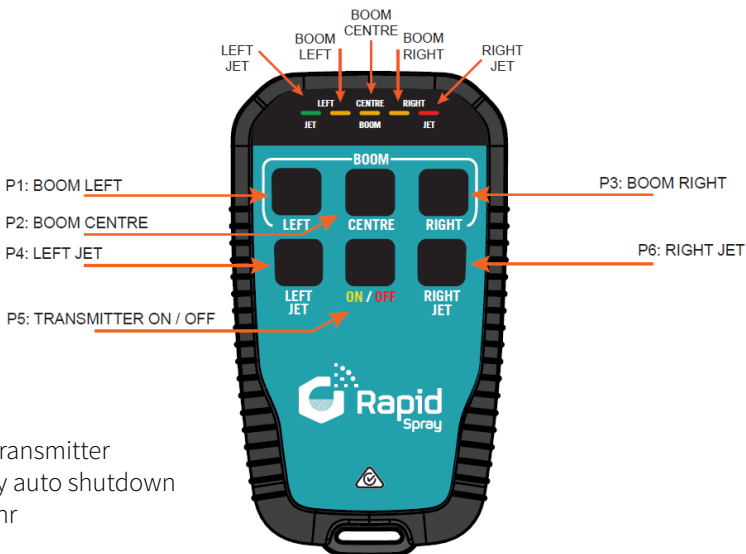
Pressure Gauge



Bypass Lever

BYPASS  
↑  
↓  
PRESSURE

Pressure Adjustment



**NOTE:** Transmitter inactivity auto shutdown time = 1hr

## FILL TANK

**NOTE:** Add desired volume of water to tank before operating chemical mix bin or chemical mix bin will not function.

1. Using the safe tank connection point, add desired volume of water.

**Air Gap Fitting**  
(backflow prevention)

**Safe tank filler connection point**



2. Ensure bypass level is in 'bypass position' then start pump.
3. Lift lever to open the flow to mix bin.

**Mix bin outlet/lever**

**Bypass lever**



## FILL TANK (CONTINUED)

4. Ensure venturi lever is in 'closed' position.
5. Open lid of mix bin and tip desired volume of chemical in.
6. Transfer chemical to main tank by changing venturi lever to 'open' position.
7. Shut lid of mix bin and squeeze bin rinse trigger to rinse out chemical residue with diluted water from the tank

**WARNING:** Do not squeeze rinse trigger with lid open unless you have a chemical drum over the drum rinse nozzle



Venturi lever

OPEN

## AGITATE TANK MIX & BEGIN SPRAYING

**NOTE:** Always read the product and follow the instructions carefully, taking special note with regard to the order in which product can be added to the tank.

### MIXING

1. Ensure mix bin outlet lever is in ‘closed’ (down) position and bypass lever is in ‘bypass’ position.
2. Run pump at 1/2 to 3/4 revs for two to five minutes to circulate and mix tank contents before spraying.
3. Change bypass lever to ‘pressure’ position.
4. Change hose reel outlet lever to ‘open’ position to begin spot spraying via the hose reel (refer to Buddy Reel instructions) and handgun or leave in ‘closed’ position to begin boom spraying.



**Mix bin outlet lever.**

Up = Open  
Down = Closed

**Hose reel outlet lever.**

Up = Open  
Down = Closed

**Bypass lever**

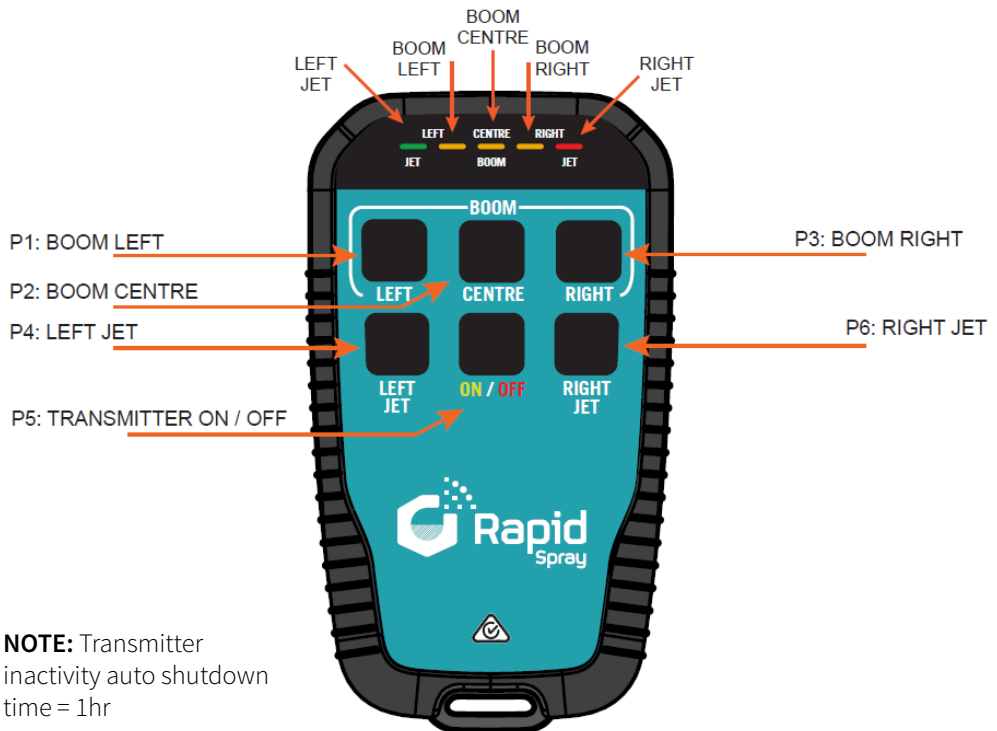
Up = Bypass  
Down = Pressure

## BOOM SPRAYING

1. Press the 'ON/OFF' (P5) button once to activate transmitter.
2. Press the 'LEFT', 'CENTRE' or 'RIGHT' boom buttons (P1, P2, P3) once to turn on the desired boom section nozzles. Centre orange indication lights at the top of the transmitter will illuminate for boom sections that are on/open. Press again to turn off.
3. Press the 'ON/OFF' (P5) button to turn multiple boom sections off simultaneously.

## SIDE JET SPRAYING (main boom in folded position)

1. Press the 'ON/OFF' (P5) button once to activate transmitter.
2. Press the 'LEFT JET' (P4) or 'RIGHT JET' (P6) to turn on desired left or right jet nozzle. Green (left jet) or red (right jet) indication lights will appear at the top of the transmitter when side jet/s are open/on. Press again to turn off.
3. Press the 'ON/OFF' (P5) button to turn multiple boom sections off simultaneously.

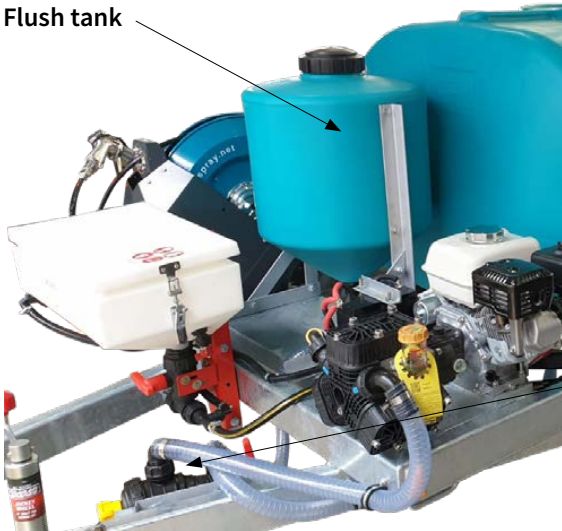


## FLUSH PUMP & PLUMBING SYSTEM

Ensure tank is emptied and pump system is flushed after each use:

1. Completely drain or pump out all contents of main tank
2. Ensure the following:
  - Turn the pump engine 'OFF'
  - Hose reel lever is in 'OFF' position
  - Venturi filler lever is in 'OFF' position
3. Ensure bypass lever is in 'BYPASS' position
4. Ensure flush tank is full of clean water
5. Turn 'FLUSH/SPRAY' lever to 'FLUSH' position
6. Start pump engine and leave on idle
7. Using transmitter, set all nozzles to 'ON' position so that all indication lights are illuminated
8. Turn bypass lever to 'PRESSURE' position
9. Allow pump to run until flush tank is empty and then turn pump off.
10. Repeat steps 4 - 9 as needed until chemical is flushed out of system.

**Flush tank**



**Flush/Spray Lever**

Up = Spray  
Down = Flush







## CLEANING & MAINTENANCE

After use, the sprayer must be thoroughly decontaminated, inside and outside. Decontaminating the tank, including pumps, hoses and nozzle, avoids damage caused by chemical residue remaining in the system. As a guide, follow the decontamination procedure below:

1. After spraying, rinse all liquid out of the tank.
 

**NOTE:** When flushing the sprayer, pay attention to where the chemical will run. Always clean in an area that will not contaminate water sources or crops.
2. After draining the tank, rinse the inside by spraying clean water with a pressure washer.
3. Turn the pump off and fill the tank with clean water and a recommended cleaning liquid.
 

**NOTE:** to ensure any residue is removed from the tank, let the water and cleaning solution sit for 8 hours.
4. The suction filter mounted on the sprayer frame must be cleaned regularly. Unscrew the filter cover and remove the filter screen and gasket. Soak in clean water, brushing with a nozzle brush. Ensure gasket is in position when re-assembling.
5. Ensuring all nozzles, filters etc. are back in place, flush the water through the entire system; turn the pump on and spray the clean water through the agitator, venturi tank filler and nozzle.

### WARNING

**Cleaning and servicing work must only be carried out once the pump operation has been fully stopped.  
Used oil must be disposed of in an adequate way and not discarded in the environment.**

#### BERTOLINI POLY 2073 MAINTENANCE SCHEDULE\*

Every use	Check condition and level of oil - replace if necessary Check the suction filter and clean if necessary
Every 50hrs service	Check inflation pressure of accumulator Make sure the suction circuit is in perfect condition
Every 500hrs service	Replace the check valves Replace the diaphragms Change oil

## MAINTENANCE SCHEDULE

Maintenance to pump and engine should be carried out regularly. Refer to pump and engine handbooks for Maintenance Schedule.

### PUMP MAINTENANCE

**Check pump Operators Handbook for maintenance schedule and further instructions.**

- Check to make sure that all screws are tightened and that no parts are missing.
- Check to make sure there are no loose connections on hoses, nozzle, lance or valves.
- Thoroughly clean the nozzle and filter. Take the cap off the filter housing and remove filter screen for cleaning. Ensure filter screen is properly located before screwing cap back on.

**INSPECT THE ENGINE - All repairs to be carried out by certified Honda dealer.**

**Check engine Honda Owners Manual for maintenance schedule and further instructions.**

- Check to make sure there are no loose or missing screws in any part of the engine.
- Clean the air filter regularly - particularly if working in a dusty environment.
- Clean and adjust the spark plug as necessary.
- Clean the cooling fan, air intake opening and parts around the muffler.
- Check the engine oil and change it as necessary.
- Inspect the fuel line filter, check for fuel leaks.

### LONG TERM CLEANING & STORAGE

- When storing the sprayer, ensure that it is clean and dry and kept in a ventilated place where it will not be subject to freezing temperatures. Frozen water may crack metal components and void warranty.
- Completely drain any water from the pump.
- Pull the recoil started handle slowly until there is no resistance.
- After removing the fuel from the tank, push the priming pump until fuel in the line runs out. Remove fuel from the tank once more.
- Check the engine oil and change if necessary.
- Set the throttle lever in the low speed position.
- Wipe away any dirt or dust.

## BERTOLINI POLY 2073

Please read the Bertolini Poly 2073 Owners Manual for full safety, operation, parts and maintenance instructions. Always follow manufacturers directions.

SPECIFICATIONS				
	R.P.M	R.P.M	550	550
Power Required	KW	HP	2.1	2.8
Weight	kg	lbs	11	24.2
Suction Lift - Max	mt	ft	1.5	4.9
Ø Intake	mm	in	32	1¼"
Ø High Pressure	mm	in	25	1"
Max Temperature	°C	°F	40	104
Oil Type	SAE	W	SAE 30	30W
Oil Capacity	Lt	U.S.G	0.7	0.18

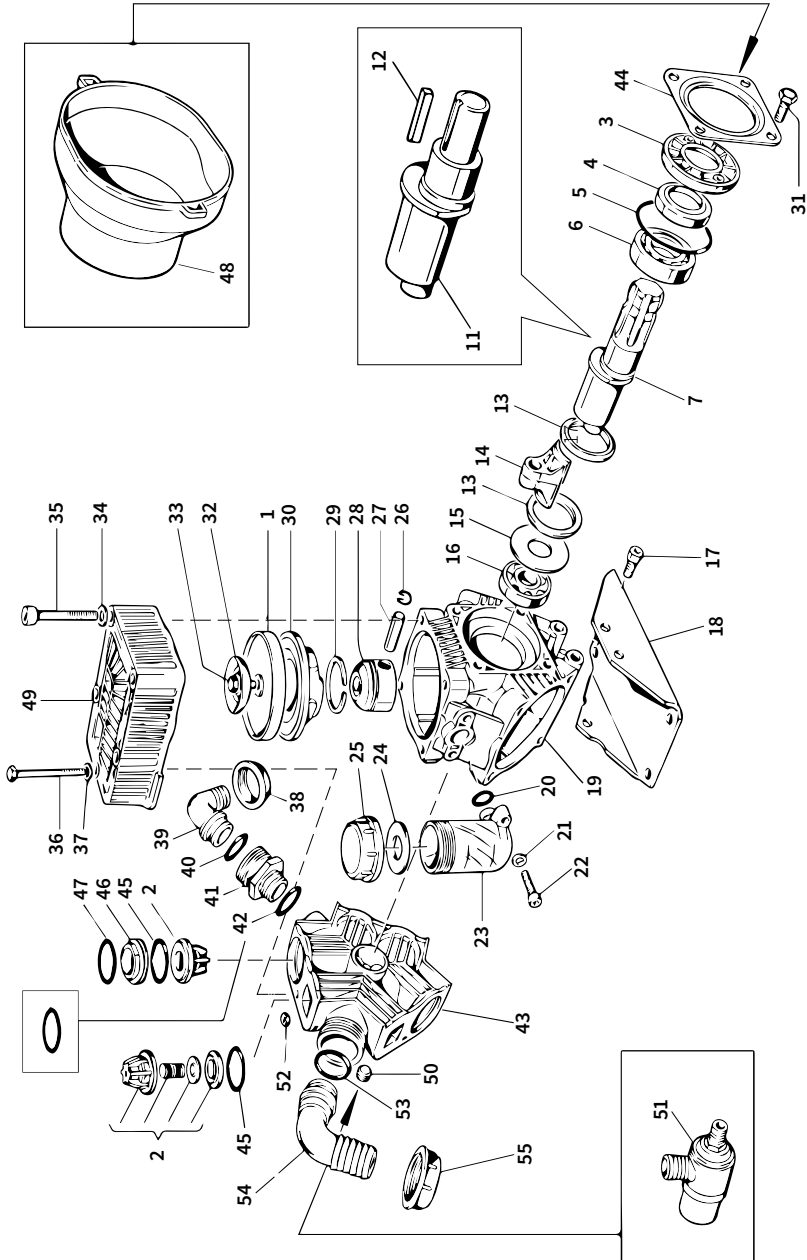
FLOW CHART									
R.P.M		400		450		500		550	
BAR	PSI	L/min	KW	L/min	KW	L/min	KW	L/min	KW
2	29	54.5	0.2	61.4	0.2	68.2	0.3	75.0	0.3
5	72.5	53.8	0.5	60.5	0.6	67.3	0.7	74.0	0.7
10	145	52.4	1.0	58.9	1.2	65.5	1.3	72.0	1.4
15	218	50.9	1.5	57.3	1.7	63.6	1.9	70.0	2.1

\*See Bertolini Poly 2073 Operators Handbook for full instructions on maintenance and care.

## TROUBLESHOOTING BERTOLINI POLY 2073

CONDITION	CAUSE	REMEDY
Pump will not prime	<ol style="list-style-type: none"> <li>1. Insufficient motor RPM</li> <li>2. Air leak on suction plumbing</li> <li>3. Blocked/ restricted intake hose</li> <li>4. Filter cap disengaged</li> <li>5. Filter gasket damaged / missing</li> <li>6. Pressure adjusting valve in the 'PRESS' position</li> </ol>	<ol style="list-style-type: none"> <li>1. Increase motor RPM until pump primes</li> <li>2. Tighten/ replace fittings and hose clamps. Verify suction hoses are in good condition.</li> <li>3. Remove blockage from suction line, ensure line is not kinked.</li> <li>4. Lock filter cap into position.</li> <li>5. Replace filter gasket.</li> <li>6. Set the regulating valve in the 'BYPASS' position</li> </ol>
Pressure drops / fluctuates during standard operation	<ol style="list-style-type: none"> <li>1. Restriction on suction line</li> <li>2. Pump sucking air</li> <li>3. Plugged filter</li> <li>4. Damaged regulator</li> <li>5. Valves have worn seats</li> </ol>	<ol style="list-style-type: none"> <li>1. Inspect tank and suction lines and remove restriction</li> <li>2. Tighten fittings</li> <li>3. Remove and clean filter mesh and housing</li> <li>4. Remove regulator stem and inspect for broken parts / pieces</li> <li>5. Check valves, hose and nozzles</li> </ol>
Pressure gauge not registering Liquid flow is irregular Pump is noisy	<ol style="list-style-type: none"> <li>1. Plugged with debris</li> <li>2. Pulsation dampener is flat</li> <li>3. One or more valves blocked</li> </ol>	<ol style="list-style-type: none"> <li>1. Unthread, check and clean pressure gauge</li> <li>2. Start pump with gun open to evacuate air</li> <li>3. Inflate the pulsation dampener</li> <li>4. Clean or change valves</li> </ol>
Output drops and the pump is noisy	<ol style="list-style-type: none"> <li>1. Oil level too low</li> </ol>	<ol style="list-style-type: none"> <li>1. Top up with oil to correct level (halfway of the sump), when pumps is operating</li> </ol>
Oil comes out of the delivery side	<ol style="list-style-type: none"> <li>1. One of more diaphragms are broken</li> </ol>	<ol style="list-style-type: none"> <li>1. Replace the diaphragms as indicated in the section "HOW TO REPLACE THE DIAPHRAGMS AND PUMP OIL" in the Bertolini Poly 2073 Operators Book</li> </ol>
Oil is changing its color into white	<ol style="list-style-type: none"> <li>1. Diaphragms are broken</li> </ol>	<ol style="list-style-type: none"> <li>1. Replace the diaphragms as indicated in the section "HOW TO REPLACE THE DIAPHRAGMS AND PUMP OIL" in the Bertolini Poly 2073 Operators Book</li> </ol>
Oil comes out from the oil seal of the shaft	<ol style="list-style-type: none"> <li>1. Damaged or worn oil seal</li> <li>2. Too much oil in the crankcase</li> </ol>	<ol style="list-style-type: none"> <li>1. Replace the oil seal</li> <li>2. Check the oil level and reset the correct one</li> </ol>

# BERTOLINI POLY 2073 PUMP



## BERTOLINI POLY 2073 PUMP

POS.	Part No.	Qty	Description
1	95.0040.31.2	3	NBR Piston Diaphragm
1	95.0040.33.2	3	Viton Piston Diaphragm (optional)
1	95.0040.36.2	3	HPS Piston Diaphragm (optional)
1	95.0040.00.2	3	Desmopan Piston Diaphragm (optional)
2	28.9809.97.3	6	S.S. Valve Assy
3	53.0007.32.2	1	Housing
4	80.2143.10.2	1	Oil Seal Dia. 35 x 52 x 7
5	80.3310.00.2	1	O-Ring 4.0 x 82
6	81.2837.00.2	1	Ball Bearing Dia. 35 x 62 x 14
7	63.0009.26.2	1	Crankshaft 'VS' Version
11	63.0016.26.2	1	Crankshaft 'VA' Version
12	80.6475.00.2	1	Tab 6.36 x 6.36 x 38
13	26.0047.76.2	2	Ring
14	23.0005.09.2	3	Light Allow Conrod
14	23.0045.11.2	3	Bronze Alloy Conrod (optional)
15	95.0097.61.2	1	Crankshaft Spacer
16	81.2646.00.2	1	Ball Bearing Dia. 20 x 52 x 15
17	86.3264.00.2	3	Screw M10 x 25 UNI5931
18	63.0006.61.2	1	Mounting Rail
19	63.0001.09.2	1	Crankcase
20	80.3180.00.2	1	O-Ring 2.62 x 15.08
21	84.3685.50.2	2	Washer Dia. 8.2 x 15 x 1.5
22	86.2682.50.2	2	Screw M8 x 25 UNI5931
23	23.0008.32.2	1	Oil Filter
24	82.4120.00.2	1	Gasket Dia. 45 x 19 x 1.5
25	85.2750.00.2	1	Oil Filter Cap
26	80.0021.00.2	6	Ring Dia. 15
27	85.2006.70.2	3	Piston Pin Dia. 15
28	63.0014.09.2	3	Piston
29	81.8504.50.2	3	Piston Ring
30	63.0015.01.2	3	Piston Sleeve
31	86.3184.00.2	4	Screw M10 x 16 UNI5739
32	63.0017.68.2	3	Disk
34	84.3801.50.2	12	Washer Dia. 10.5 x 21 x 2
35	86.3562.50.2	12	Screw M10 x 70 UNI5931
36	86.3002.00.2	3	Screw M8 x 75 UNI5931
37	84.3693.00.2	3	Washer Dia. 8.4 x 17 x 1.6
38	82.0067.50.2	1	Wing Nut G.1"¼
39	84.0542.40.2	1	90° Elbow Connector Dia. 25



## BERTOLINI POLY 2073 PUMP

POS.	Part No.	Qty	Description
40	80.3219.05.2	1	O-Ring 3.0 x 25 Viton
41	83.5089.00.2	1	Nipples G.1" - G.1"¼
42	80.3219.10.2	1	O-Ring 3 x 30
43	63.0003.32.2	1	Manifold
44	17.0016.61.2	1	Flange
45	80.3320.80.2	6	O-Ring 5.34 x 40.65
46	28.0229.32.2	4	Valve Assy Spacer
47	80.3219.80.2	4	O-Ring 3.0 x 39
48	31.1468.32.2	1	Plain Safety Cone
49	63.0022.32.2	3	Head
50	85.2585.00.2	1	Cap G.¾
51	24.3015.97.3	1	Safety Valve 15 bar (optional)
52	84.4574.50.2	3	Nut M8 UNI5588
54	84.0570.00.2	1	90° Elbow Connector Dia. 35 (optional)
54	84.0561.00.2	1	90° Elbow Connector Dia. 30 (optional)
54	84.0566.00.2	1	90° Elbow Connector Dia. 32 (optional)
54	84.0571.00.2	1	90° Elbow Connector Dia. 38 (optional)
54	84.0591.00.2	1	90° Elbow Connector Dia. 40 (optional)
55	82.0070.00.2	1	Wing Nut G. 1"½

## HONDA GX200 ENGINE

**Please read the Honda® Owners Manual for full safety, operation, parts and maintenance instructions. Always follow manufacturers directions.**

### SAFETY INFORMATION

- Understand the operation of all controls and learn how to stop the engine quickly in case of emergency. Make sure the operator receives adequate instruction before operating the equipment.
- Do not allow children to operate the engine. Keep children and pets away from the area of operation.
- Your engine's exhaust contains poisonous carbon monoxide. Do not run the engine without adequate ventilation and never run the engine indoors.
- The engine and exhaust become very hot during operation. Keep the engine at least 1m (3 ft) away from buildings and other equipment during operation. Keep flammable materials away, and do not place anything on the engine while it is running.

#### **WARNING**

Improperly maintaining this engine, or failure to correct a problem before operation can cause a malfunction in which you can be seriously hurt or killed.

Always perform a pre-operation inspection before each operation and correct any problem.

# WARRANTY

## Warranty Policies and Procedures

The following warranty is the only warranty applicable to RAPID SPRAY products, and to the maximum extent permitted by law, overrides any other conditions or warranties Expressed or implied on RAPID SPRAY products.

Other than legislative obligations to the contrary, RAPID SPRAY will not be liable for and incidental or consequential damages arising from the ownership or use of a product. No person, including any dealer or representative of RAPID SPRAY is authorized to make any representation or warranty on behalf of RAPID SPRAY in addition or inconsistent with these provisions. Purchasers to whom these provisions apply agree to hold RAPID SPRAY not liable for claims by their customers in excess of the obligations of RAPID SPRAY expressly set forth herein.


NOTE: All tank and spray systems must have their warranty activated by returning warranty card located at the end of this document or registering online within 21 days of purchase by the end user.

## The Warranty

All products sold by RAPID SPRAY are guaranteed to be free from defect in materials workmanship or manufacture for a period of 12 months from the initial date of purchase, excepting the following exclusions;

Any parts/products found by RAPID SPRAY to be defective, either in material or workmanship will be replaced or repaired within this period, at no cost to the initial purchaser if following conditions are met:

- The item has been operated in accordance with all instructions and warnings provided
- Item is still owned and operated by the original purchaser - proof of purchase is required to obtain warranty



See <https://www.rapidspray.net/resources/warranty-registration> to register for warranty.



**The following things are expressly excluded from the above warranty.**

<b>Abuse</b>	Failure as a result of neglect, such as improper operation. Lack of maintenance or continued operation after discovery of a defect that leads to further damage
<b>Alterations</b>	Any unauthorized alteration, modification, attachments or unauthorized repair to equipment.
<b>Clean-up Time</b>	RAPID SPRAY does not pay for cleaning of products, parts or accessories or work area before or after the warranty repair.
<b>Damage</b>	Damages or machine/component failure caused by carelessness/recklessness or accidental damage, improper operation, excessive speed, inappropriate storage or transportation.
<b>Environmental Conditions &amp; Application</b>	Deteriorated or failed components such as o-rings, diaphragms, hoses, seals and connections damaged by corrosive chemicals, dirt and sand, excessive heat, moisture or other environmental impacts. Warranty determination on these type of failures will be made by RAPID SPRAY, only after inspection of the failed component.
<b>Inability   Unsuitability</b>	In no event shall RAPID SPRAY be liable to any person for indirect or consequential damages or for injury or commercial loss resulting from any use or inability to use any RAPID SPRAY product.
<b>Maintenance</b>	Component failure due to failure to perform maintenance services such as, oil and grease changes/top-ups, failure to clean tanks, pumps filters, nozzles and spray lines. Failure to tighten or replace loose or missing bolts, nuts, fittings, shields and covers.
<b>Non-Genuine Parts</b>	Use of parts other than RAPID SPRAY parts for repair of warranted items will automatically negate any warranty. Warranted components must be replaced with genuine parts.

# WARRANTY REGISTRATION

You can register online at [www.rapidspray.net/resources/warranty-registration](http://www.rapidspray.net/resources/warranty-registration) or complete all the details below and post this form back to:

**Rapid Spray, PO Box 3119, Singleton NSW 2330**

Model ..... Serial No .....

Purchased From .....  
(Dealer Name & Town)

Purchaser's Name .....

Purchaser's Address .....

Purchaser's Phone Number .....

Purchaser's Email .....

Disclaimer: If you don't want us to keep you informed of new products, please tick the following circle:

**To help us help you further, please complete the following:**

### Purchaser's Age

- Up to 25
- 25 - 40
- 41 - 55
- Over 55

### Principal Usage

- Commercial farm
- Hobby farm
- Industrial
- Other.....
- Town council
- Hire company
- Home

### What influenced you to purchase a Rapid Spray product?

- Received Catalogue
- Newspaper advertisement
- Magazine advertisement
- Dealer recommendation
- Friends recommendation
- Better features than competitor product
- Quality & reliability
- Price
- Past experience with Rapid Spray products
- Other.....

### What other Rapid Spray products do you use?

- Spray tanks
- Cartage tanks
- Diesel tanks
- Fire fighting
- Boom sprayers
- Bertolini pumps & controllers
- Inter knapsacks | Compression sprayers
- Other.....



---

Call us on 1800 011 000 or  
visit [www.rapidspray.net](http://www.rapidspray.net)

## **Rapid Spray**

35 Enterprise Cres, Singleton NSW 2330  
PO BOX 3119 Singleton NSW 2330

Telephone: 1800 011 000  
Facsimile: 02 6571 2951

---

