

# Active Liquid Tanks

## Specification Sheet



PTC00200ATO

### 200 litre Free Standing Cartage Tank Complete with 10 Litre Fresh Water Tank

#### Unit Specifications

Item	Description	Details
Tank	200 litre	UV stabilised polyethylene specially formulated for transport tanks. Complies with AS2070:1999 & AS4766:2006 compliant. Food grade with 15 year warranty.
Fresh water tank	10 litre	10 litre fresh water tank comes complete with tap and 100mm screw lid with breather
Lid	255mm	255mm threaded lid assembly with fixed labyrinth breather valve made to current anti-pollution standards with double breather valve to empty tank quickly even with high delivery pump
Tank outlet	3/4"	3/4" poly drain bung & seal
Dimensions	PTC00200ATO	910mm(L) x 730mm(W) x 670mm(H)
Dry weight		17.5kg
Baffles		No baffle
Colour		Teal Opaque
Load Rating		1.3 Specific Gravity (SG)
Mounting	M8 brass inserts	4 x threaded brass inserts in base of tank

\* Tank dimensions may vary slightly due to the manufacturing process

Freecall 1800 011 000  
[www.rapidspray.net](http://www.rapidspray.net)



# Active Liquid Tanks

## Specification Sheet

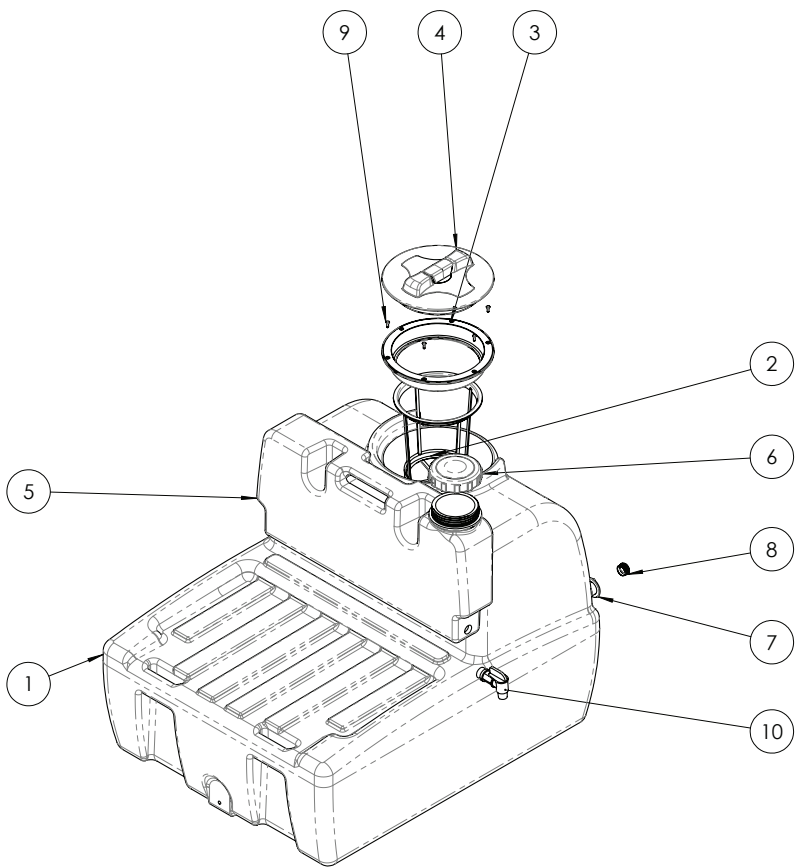
### Features

- Unconditional guarantee against rust
- Extraordinary impact resistance
- Impressive range of 'flex' to cope with chassis movement and twisting in tough operating conditions
- Calibrated for measurement of contents
- Mounts directly to any flat surface
- Spill containment lip surrounds lid
- 'Eazi-Grip' – lift and carry handles for convenient portability
- Australian made for Australian conditions
- Optional tank colours available

### For Use

- Potable (drinking water delivery)
- Dust suppression units
- Liquid fertiliser transport
- Water supply for spraying contractors
- Drillers mud
- Molasses transport

### Dimensional Drawing – PTC00200ATO



OVERALL DIMENSIONS		910(L) X 730(W) X 620(H)
ITEM	CODE	Description
1	AMPTC00200AFG	200 Litre Squat Tank
2,3,4	ARLP250VSR	ø255 Lid Assembly
5	AMAXPM010BK	10 Litre Rinse Tank
6	ARLP100V	100mm screw lid with breather
7,8	CFNB20M	3/4" Poly Drain Bung & Seal
9		Stainless Steel Screws
10	CFVTP20M	3/4 20mm Poly Tap